



# Proposed Pathway Plan

**Matt Dyck**  
**December 2020**

**Ko Tātou**

THIS IS US BIOSECURITY 2025



# What's being proposed



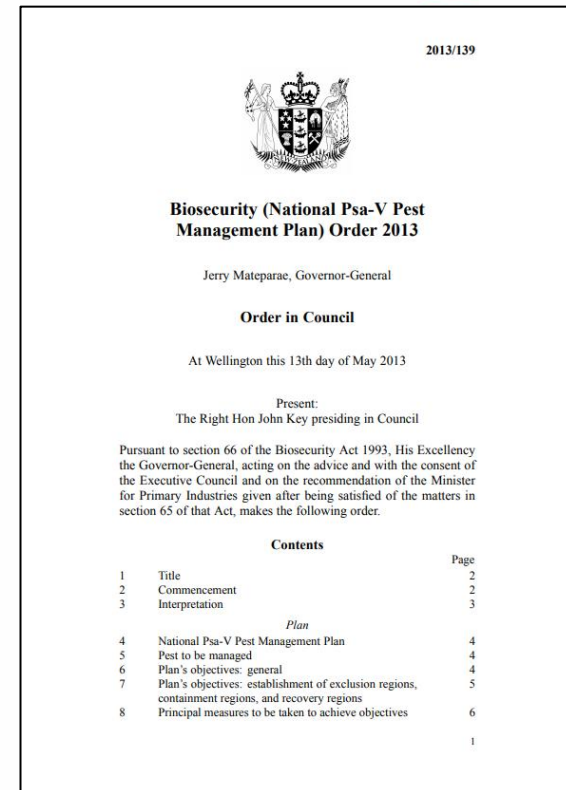
## National Psa-V Pest Management Plan (NPMP) since 2013:

- Successful in reducing impact and spread of Psa
- Expires in 2023
- Only focusses on Psa and KVH works in readiness and response for multiple threats

## Pathway Management Plan (PMP):

- Manages risk across pathways into orchards
- Keeping it simple
- Very little change from current plan except to increase ability to respond to multiple pests across pathways

## Fiscally neutral (levy)



# What are our objectives?



The proposed Pathway Plan will:

1. detect biosecurity threats on kiwifruit industry pathways early, and reduce their spread
2. ensure biosecurity threats can be rapidly traced on kiwifruit industry pathways
3. improve understanding of kiwifruit industry pathway risks and how they can be cost-effectively managed



THEGUARDIAN.COM

**Mystery disease killing Italy's kiwifruit baffles scientists**

Government taskforce to study sickness devastating kiwi orchards across...



# Feedback on the overall proposal



What we have heard during consultation...

**Makes sense,  
support KVH's  
proactive approach,  
just keep it simple**

**Compliance burden is  
increasing, so where  
possible link into  
existing schemes**

**Concern about loss of  
focus on border**

**If it's too hard people  
won't do it**

# Timeline to implementation



Dec 2019 –  
Sep 2020

Develop full Pathway Plan proposal after first high-level consultation

Sep – Dec  
2020

Detailed consultation and roadshows

January  
2021

Submit proposal to MPI and Minister

2021

Parliamentary process  
Implementation/operational planning

1 April  
2022

Implementation of Pathway Plan



# **Keep it simple and appropriate to level of risk**

---

Scalable model

---

**Changes to Psa testing requirements**

---

**Changes to flower collection**

---

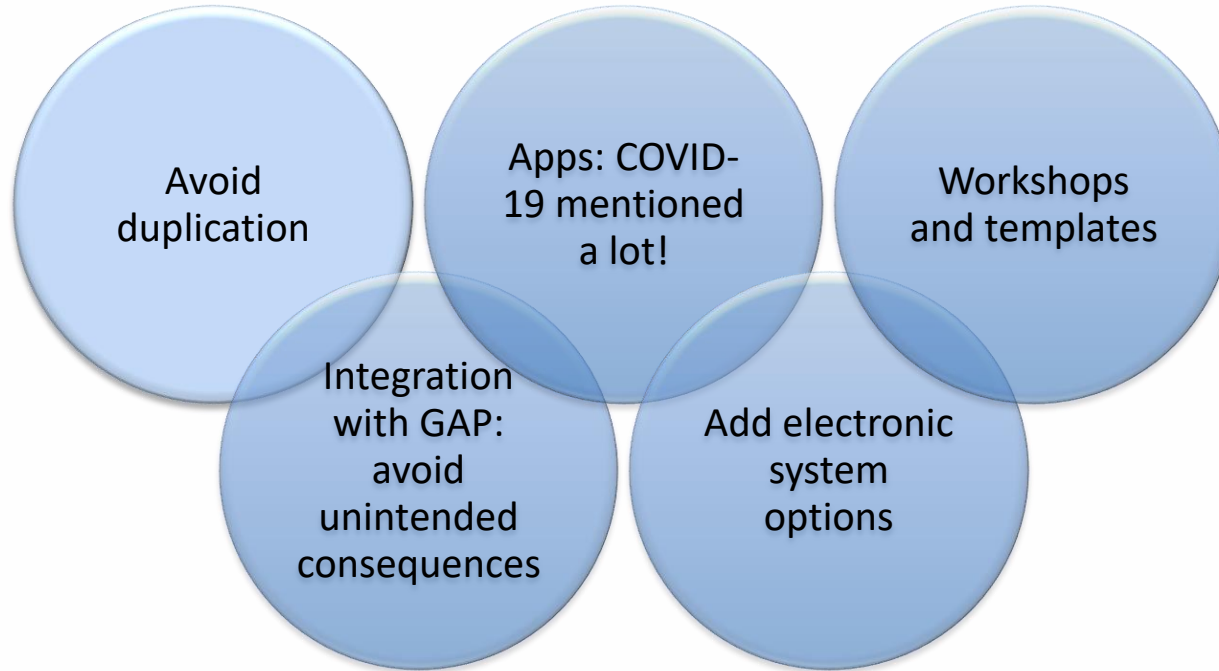
Not all movements carry same risk

---

Focus on contractors with greatest risk



# Tools to make it easy





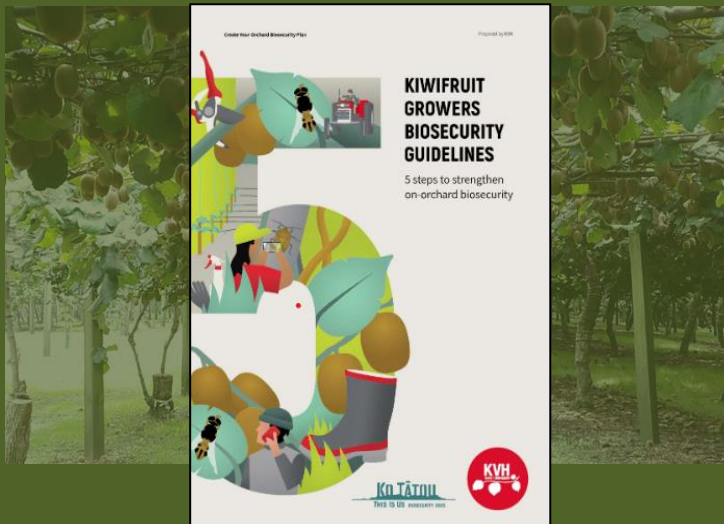
## Plant Material

- Rootstock & grafted plants
- Mature plants
- Budwood
- Pollen
- Shelter plants

## Organic matter inputs

Compost, soil and mulch

## Kiwifruit orchard



## People and equipment

- Orchard management services
- Shelter belt trimmers
- Spray contractors
- Orchard infrastructure
- Harvest crews & bins
- Grafters





# Exercise

- What tools and resources would work for you when we start to implement the Plan? Please tell us! No idea is too big or too novel.
- Concentrate on the categories of smart tools and providing support. Be creative.
- Choose a winning idea for each.
- During the break we'll put them on display and then summarise at the end of the day.

