

Biosecurity video activity

The objective of these videos is to reinforce and gain an understanding of good biosecurity practices on-orchard.

In this activity the participants should be shown two videos: one missing recommended biosecurity practices on the orchard (1 min) and one with these biosecurity practices being implemented on the orchard (2 mins).

After seeing the first video with the practices missing, the facilitator will lead the group in a brainstorm and discussion about what biosecurity practice were missing. Focus on the three major steps of 'arrival to the orchard', 'working on the orchard' and 'leaving the orchard'. The facilitator can write ideas from the group on a whiteboard/flipchart and organise these in to the three steps (arrival, working and leaving). Keep in mind we want to focus on biosecurity – not health and safety.

After around 5-10 minutes of discussion, the group should then be shown the next video where the workers are following good biosecurity practices on-orchard. The group can watch the video all the way through first. Then, the facilitator can take the group back through the video starting and stopping at the points of discussion.

The videos focus on three key takeaway messages, based on KVH resources:

Takeaway message from video	KVH On-orchard guidelines livelihood poster
1. Know who is coming to the orchard and what they are doing	1. <i>Understand your risks</i> 2. <i>Agree what must happen on site</i>
2. Keep it clean	3. <i>Source and trace clean plant material</i> 4. <i>Check and clean</i>
3. Keep a lookout and monitor	5. <i>Report the unusual</i>

Resources:

Facilitator should have:

- Equipment needed to play videos (computer, projector/screen, cords etc)
- Whiteboard/flipchart and pens to write down ideas/discussion
- Copies of KVH's on-orchard guidelines livelihood poster for participants



Biosecurity video activity

Use this as a guide (or read it out) to introduce the activity to the group:

In this activity, we will be looking at understanding good biosecurity practices on orchards. We will be reviewing a video showing a group of workers arriving, working, and leaving the orchard.

What we want you to do is to spot what biosecurity practices are missing and we will discuss this after the video.

Then we will watch a second video to which will have some of the biosecurity practices implemented.

Any questions? Let's get started.

Missing biosecurity practices

1. Know who is coming to the orchard and what they are doing

- Keep signage and contact details up to date
- Keep gates closed
- Have all workers sign in or contact the grower/manager before entering

2. Keep it clean

- Park in the designated parking area
- If no parking area, park in the loading bay – do not park under the vines
- Clean tools before use
- Clean tools regularly during work

3. Keep a lookout and monitor

- If you see anything unusual, mark and monitor unusual symptoms
- Take a photo and report to the grower/manager
- Report anything unusual: "Catch it, snap it, report it" to Biosecurity New Zealand and/or KVH
- Clean shoes and equipment before leaving the orchard (anything that may carry soil or plant material)



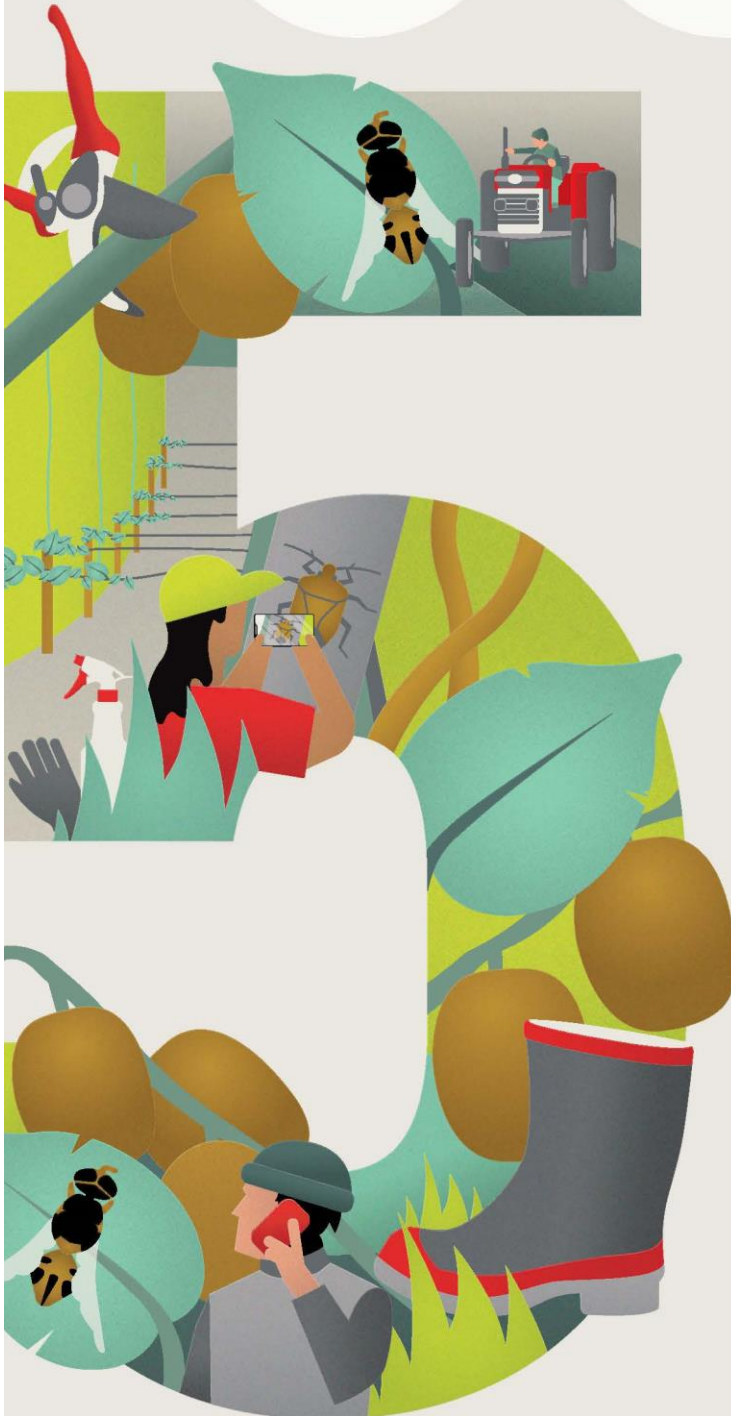
YOU HAVE THE POWER TO PROTECT YOUR LIVELIHOOD

Kiwifruit biosecurity threats could affect... Orchard Gate Return • Jobs • Community

THE NEXT
BIG THREAT
COULD BE HERE,
UNDETECTED AND
SPREADING.

IT MIGHT
ALREADY BE
ON YOUR
DOORSTEP.

YOUR
LIVELIHOOD IS AT
CONSTANT RISK.



5 steps to protect your investment



1. UNDERSTAND YOUR RISKS

What pests and diseases could arrive from offshore?

- What is happening in my local area?
- How might these enter my orchard? (Who and what enters my orchard that might bring these in?)



2. AGREE WHAT MUST HAPPEN ON SITE

- Share knowledge with staff and contractors.
- Agree requirements and ensure that they are met.



3. SOURCE AND TRACE CLEAN PLANT MATERIAL

- Rootstock, budwood, pollen, shelter and compost.
- Kiwifruit Plant Certification Scheme (KPCS) certification is mandatory for sourcing rootstock.
- Keep tracing records updated.



4. CHECK AND CLEAN

- Consider the risk from: tools, vehicles and machinery, harvest bins, people, clothing.
- Ensure everything coming across your boundary is free from soil and plant material.
- Sanitise highest-risk items.
- Clean tools at least between rows.



5. REPORT THE UNUSUAL



CATCH IT



SNAP IT



REPORT IT

CALL KVH **0800 665 825**

OR MPI **0800 80 99 66**

Create your own orchard biosecurity plan with the detailed 5 step Kiwifruit Growers Biosecurity Guidelines available from KVH.

KO TĀTOU
THIS IS US BIOSECURITY 2025

