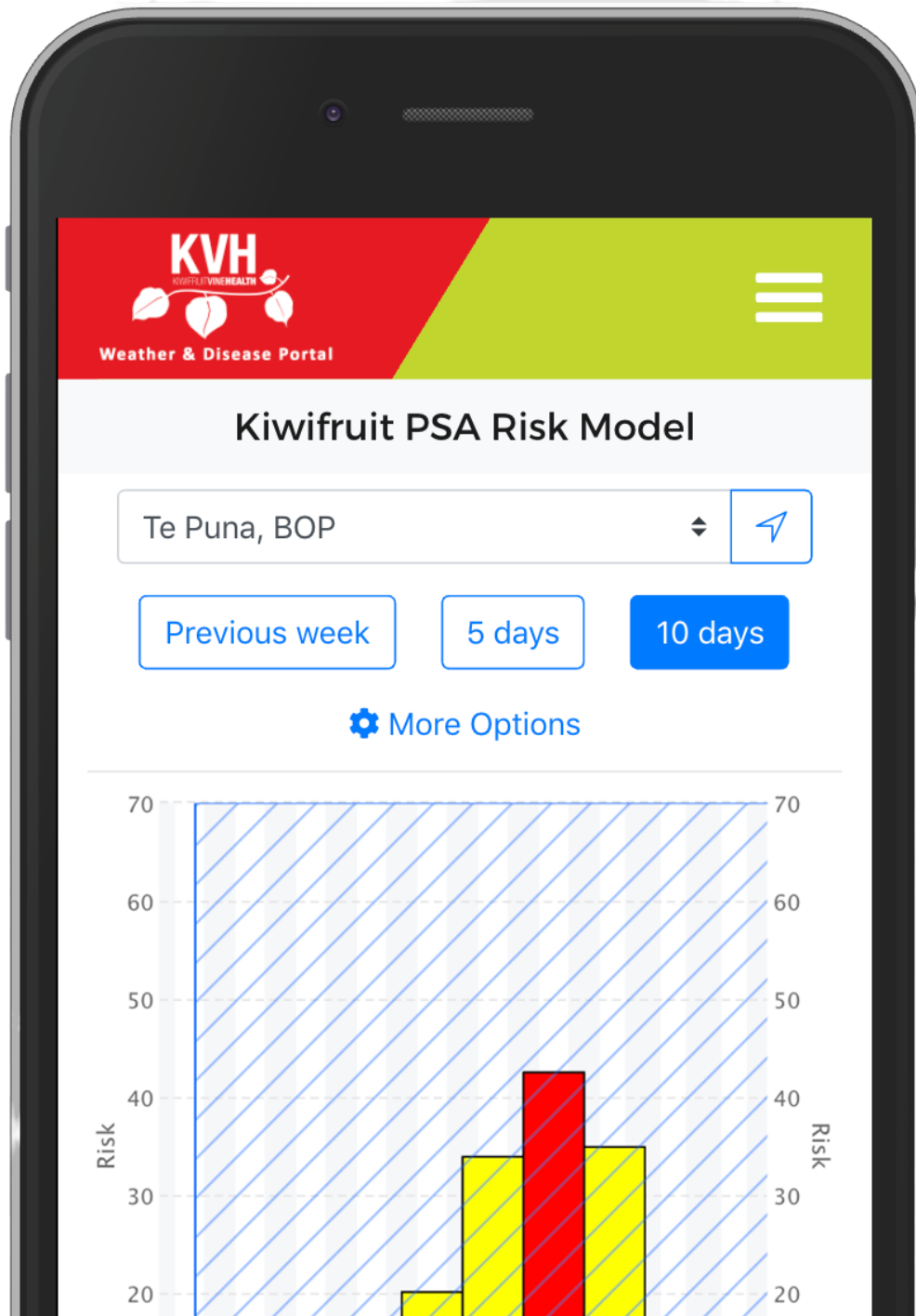
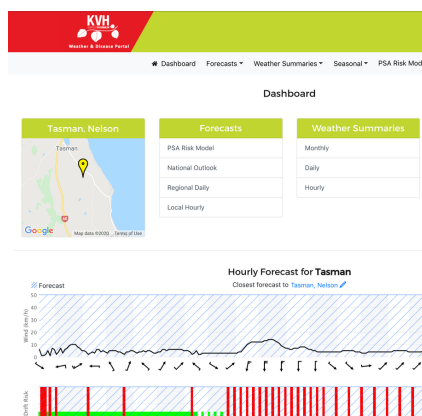


KVH Snapshot

NEWS YOU CAN USE



The new KVH Weather & Disease Portal



We're delighted to let you know about the new and improved KVH web-based Weather & Disease Portal. Everything from the risk model you've been using up until now is still available within the new portal, as are new features including updated graphs and information, new tools and forecasts, and a mobile-friendly interface that is easy for you to access on any device.

[Read more here.](#)

Heightened awareness for hitchhikers



Since the start of the high-risk season in September 2019 there have been 57 Brown Marmorated Stink Bugs (BMSB) found, about a quarter of what was found at this time last season.

As we move in to COVID-19 Alert Level 3 growers and the public are reminded to keep an eye out for stink bugs and other potentially hitchhiking pests (dead or alive) that could have been hiding out in stationary cargo during the lockdown.

[Read more here.](#)

Pest page up and running



There's a new Spotted Lanternfly (SLF) web page on the KVH website, containing all you need to know about one of kiwifruit's most unwanted pests. The page includes images, video, fact sheets and SLF reference material to help growers understand the risk this pest poses to the industry and how to identify it (and its eggs).

[Read more here.](#)

The KVH Snapshot provides you with brief biosecurity messages that you can reproduce and share. Contact lisa.gibbison@kvh.org.nz for more information related to the topics listed, or to add others to the Snapshot distribution list.

The borders are closed but has risk gone away?



KVH is calling upon growers to ensure that on-orchard biosecurity for kiwifruit pests and pathogens is not forgotten and most importantly to keep an eye out for any unusual vine symptoms during harvest and report these to KVH for follow up. If an incursion were to occur now - while the country is facing an unprecedented human health and economic challenge - the impact could be severe.

[Read more here.](#)

New BMSB grower guide



KVH has developed a helpful new guide for growers, detailing the likely options for on-orchard management of Brown Marmorated Stink Bug (BMSB) should it establish here. The guide is split into several different sections and covers likely impacts to fruit and orchards; expected seasonal timing of impacts; on-orchard management and control tools such as exclusion netting and biological control.

[Read more here.](#)

Preparing to fight Phytophthora



As well as the Spotted Lanternfly page mentioned on page 3, we've added extra information to the Kiwifruit's Most Unwanted section of our website, all about Phytophthora.

Phytophthora is present around the world, including New Zealand, in a wide range of hosts. There are over 100 known species, with thoughts there could be up to 500 more yet to be identified.

[Read more here.](#)

The KVH Snapshot provides you with brief biosecurity messages that you can reproduce and share. Contact lisa.gibbison@kvh.org.nz for more information related to the topics listed, or to add others to the Snapshot distribution list.

Progression of new Pathway Management Plan

Late last year, KVH announced to growers that we were starting to look at a new regulation framework to better manage biosecurity risk to the kiwifruit industry, and asked for feedback on our early, high-level thoughts about specific activities the Plan will help manage, and how it will be put into action.

A key driver was to ensure that we have measures in place to prevent the spread of a broad range of biosecurity threats, rather than our current regulation, which is specific to a single organism, Psa.

[Read more here.](#)

KPCS changes to manage biosecurity risk

With biosecurity being an essential service and KVH continuing to operate, staff are working from home to maintain social distancing in order to help keep nursery operators and our staff safe. For the Kiwifruit Plant Certification Scheme (KPCS), we have an approach that we feel strikes the right balance of managing biosecurity risk, supporting the government's Covid-19 efforts, and supporting nurseries to maintain their business of getting plants to growers this season.

[Read more here.](#)

Sanitisers and orchard hygiene

Growers are reminded that by following Psa best practice orchard hygiene they may well be protecting themselves and workers against Covid-19. For example, plain Janola (unscented) at 1% if used on picking bags to kill Psa has also been shown to inactivate coronaviruses within a minute.

[Read more here.](#)

No new fruit flies found

We're still in the high-risk season for fruit flies, with close monitoring and site trapping continuing. Latest data from Biosecurity New Zealand includes great news – there were no fruit fly detections in New Zealand in March. Australia does have a couple of new responses underway however.

[Read more here.](#)

Keeping OnSide with on-orchard requirements

Traceability is a key pillar of biosecurity and has been a particular focus for KVH over the last few years. We are continually looking for ways to make this easier for growers and the wider industry and have been investigating digital platforms such as OnSide, an app that was originally developed for health and safety but has growing biosecurity functionality as well.

[Read more here.](#)

Autumn Psa reminder

This week a Gisborne grower forwarded an image of a young Gold3 trunk showing recent Psa exudate. It provides an important reminder that despite a long dry summer, Psa never really goes away and can quickly reactivate as temperatures cool and rain periods become more prevalent.

[Read more here.](#)

Kiwifruit stands out in surveillance stats

The latest Ministry for Primary Industries (MPI) Surveillance magazine has been published, providing new facts and figures about biosecurity surveillance, and the health status of New Zealand's animal and plant populations. Of great credit to the kiwifruit industry is the noticeable number of reports through to MPI for suspect stink bugs by individuals from within our industry.

[Read more here.](#)

Moving budwood

Budwood movement will be a focus for many suppliers and growers at this time of year, particularly those cutting over to new licences and those with new plantings.

As budwood poses the highest risk of disease transfer, please remember to use the cleanest source of budwood, from your own orchard where possible. Suppliers must be registered with KVH and supply a copy of their Psa-V Risk Management Plan.

[Read more here.](#)

Coronavirus news hub for the kiwifruit industry

Unite
against
COVID-19

A reminder that up-to-date information about Coronavirus is available on the NZKGI website. The page has been set up to make it easier for people across the kiwifruit industry to get updates and resources on Covid-19 for all things kiwifruit related, such as pastoral care information and contacts, an overview of the governments financial package for packhouses, packhouse/contractors and orchard owners and employees, as well as information from Zespri on food safety.

[Read more here.](#)

Follow us on social media



Don't forget you can keep in touch with us on our Facebook and Twitter pages.

- [Click here](#) to follow us on Facebook
- [Click here](#) to follow us on Twitter

We also post videos from event days and grower meetings on our You Tube channel. [Click here](#) to subscribe.

Get in touch while we work remotely



KVH staff continue to work from home in response to the Government's efforts to combat COVID-19. We have the ability to continue to operate with staff working remotely and you can contact us at info@kvh.org.nz or by calling 0800 665 825 if you need anything.

[Read more here.](#)