

KVH Snapshot

NEWS YOU CAN USE



QUEENSLAND FRUIT FLY

Queensland fruit fly response closed down



The joint Government and industry response to unwanted fruit flies has been closed out, with New Zealand fruit and vegetable grower representatives saying they are pleased with the successful result. The move signals the end of an almost year-long operation, including a massive effort by the community, triggered by the discovery of a Queensland Fruit Fly in a surveillance trap in the area last February.

[Read more here.](#)

New fruit fly guide for kiwifruit growers



KVH has developed a helpful new guide for growers, detailing the likely sequence of events if a fruit fly response was to occur in a kiwifruit growing region. The guidelines can be used to help business continuity planning at an orchard level and are split into areas including detection methods, controls implemented in the event of a detection, and what happens in different levels of response.

[Read more here.](#)

BMSB preparedness always improving



KVH works closely with Zespri, Biosecurity New Zealand and others across the kiwifruit industry to ensure we are all prepared for Brown Marmorated Stink Bug (BMSB), if it were to arrive and establish here. We've recently updated two important documents available on our website to reflect advances in knowledge and international learnings.

[Read more here.](#)

The KVH Snapshot provides you with brief biosecurity messages that you can reproduce and share. Contact lisa.gibbison@kvh.org.nz for more information related to the topics listed, or to add others to the Snapshot distribution list.

Visiting European experts share BMSB knowledge

Just before Christmas at Plant and Food's Te Puke Research Centre, two European Brown Marmorated Stink Bug (BMSB) experts shared accounts of research that is currently underway in Italy.

Their research group has developed a biosecurity mapping app called "BugMap" to track the spread and densities of BMSB. The success of "BugMap" has led to the adoption of the app by chocolatier Ferrero Rocher in Georgia, a country where these bugs are now affecting hazel nut supply.

[Read more here.](#)

KiwiNet members bring response knowledge back

KiwiNet members continue to share their experiences working on the fruit fly responses in Auckland. Team members Nory Estal and Carol Smart, both from Orangewood, tell us what it was like day-to-day when they were deployed into the response; what they got out of it; what they learnt about the importance of biosecurity to an industry like ours; and their advice to anyone thinking about joining KiwiNet and taking part next time.

[Read more here.](#)

Whangarei region status: Containment

As of 20 January 2020, there are nine confirmed PsA positive orchards in Whangarei, affecting 15% of the region's orchards and 22% of hectares. The current status of the whole region is **Containment**. There are no Controlled Area Notices applicable to this region.

[Read more here.](#)

Making use of the PsA Risk Model

A reminder that KVH has an online video tutorial to guide growers through the PsA Risk Model. Developed as an online, weather-based decision support system, the model helps growers with orchard management in a PsA environment.

[Read more here.](#)

On the lookout for fruit fly

There were two fruit fly finds at the border in November, neither of which were our highest-risk Queensland Fruit Fly (QFF) or have required any response activity.

One interception was of Mediterranean Fruit Fly larvae in an apple, and the other was Oriental Fruit Fly larvae in rambutans (an exotic tropical fruit). Both were found in material seized from passengers.

[Read more here.](#)

New KVH Associate Director

The KVH Board are pleased to announce the appointment of Cody Bent to the Associate Director position on the KVH Board for a two-year term.

The Associate Director role is a development opportunity for a kiwifruit industry future leader to join the KVH Board and gain experience in governance, leadership and strategy while bringing his/her own industry knowledge and experience to the Board table.

[Read more here.](#)

Hill Laboratories pricing change

A reminder that Hill Laboratories has advised there will be a price increase for standard Psa tests from 1 February 2020. Current prices have been in place since 2011, but due to increased operational costs this change is necessary. The cost of Psa testing will move from \$65 to \$85 per sample (+GST).

[Read more here.](#)

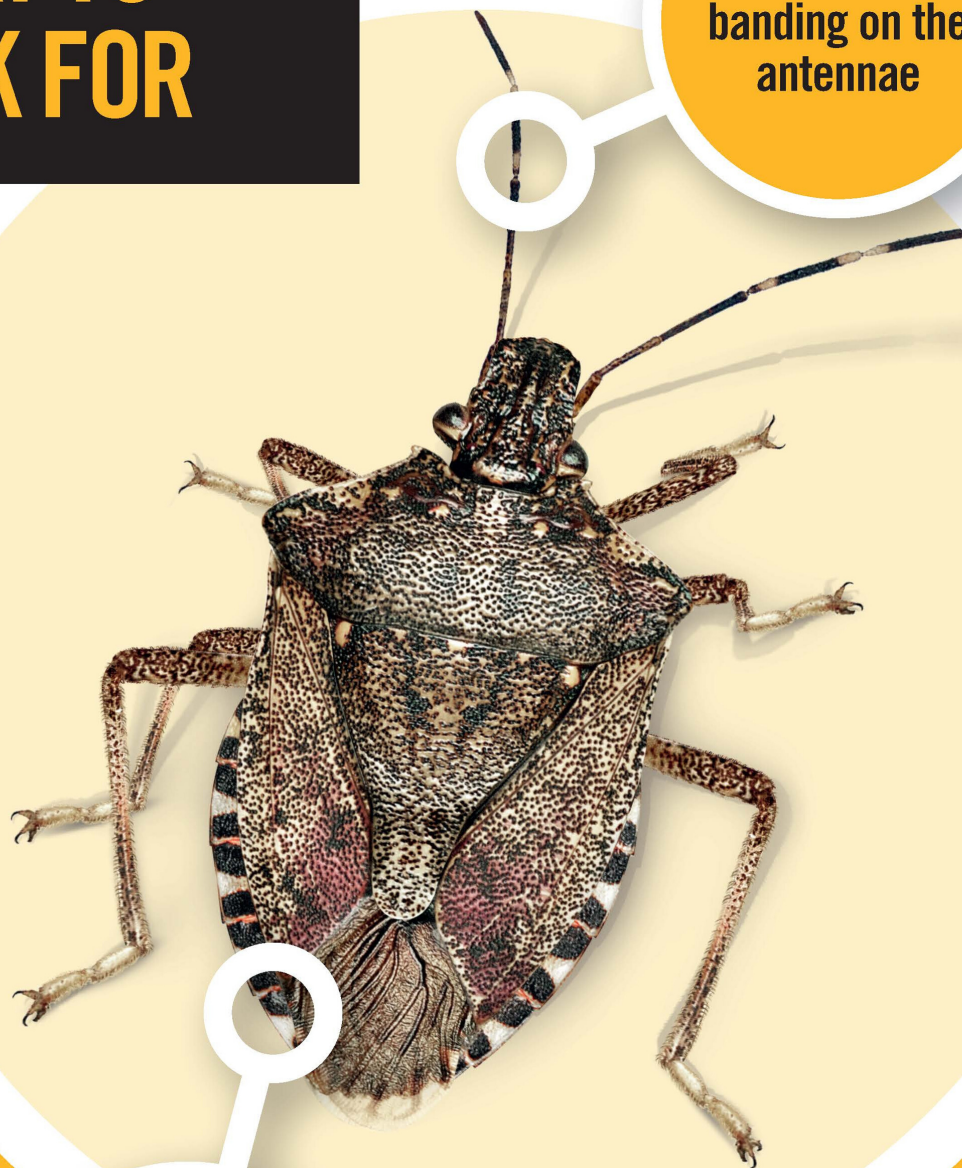
New BMSB posters

We have new stock of bright yellow A3 Brown Marmorated Stink Bug (BMSB) ID posters available - see a copy on the next page.

Contact us if you'd like some sent to you for the orchard surrounds, office, staffroom or anywhere else people are gathering and could benefit from being reminded about the importance of finding and reporting possible sightings of this unwanted bug. The posters display the two easiest things to look out for (black and white banding on the antennae, and black and white banding on the sides of the abdomen) and the 0800 number for the pest and disease hotline.

WHAT TO LOOK FOR

Black & white
banding on the
antennae



Black & white
banding on the
sides of the
abdomen



— Scale —



CATCH IT



SNAP IT



REPORT IT

EXOTIC PEST & DISEASE HOTLINE

0800 80 99 66