



Protect your investment, manage biosecurity risks

Psa management

Winter is the best time to remove Psa cankers and infected plant material – this breaks the disease cycle and reduces the risk of spring infection.

- ✓ Best practice – cut 40cm behind last infection point.
- ✓ Remove Psa infected material ahead of the main pruning crew.
- ✓ Prune from least infected to most infected areas. Remove late growth from male vines.
- ✓ Ensure tool hygiene and apply protectants to wounds and cuts.
- ✓ Use the Psa Risk Model to plan sprays and pruning – available at www.kvh.org.nz.
- ✓ Apply five coppers at full winter rates: immediately after harvest; through leaf fall; before and after pruning; and immediately before budbreak.
- ✓ Check young plants receive good spray coverage.

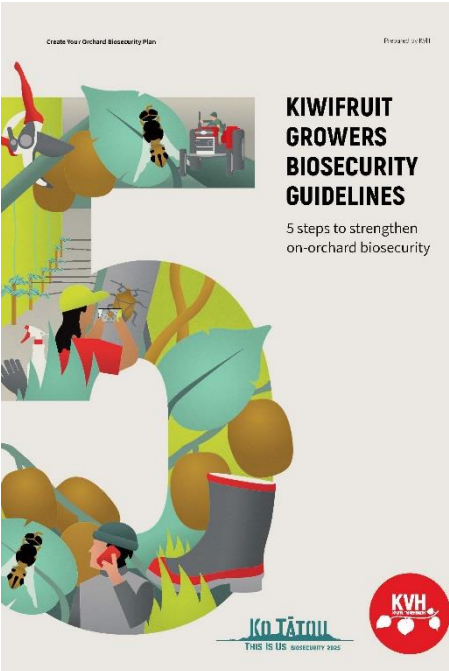


Source and trace clean plant material

Strong healthy plants and budwood free of pests and diseases including Psa, safeguards your investment and provides the best start for new development blocks.

- ✓ Source KPCS certified plants – these have met robust traceability, hygiene, monitoring and testing requirements.
- ✓ Full certification plants are free from a range of organisms including Psa.
- ✓ Source grafting material from your own orchard if possible – check vines are free from any disease symptoms.
- ✓ Alternatively, source the cleanest possible material from registered budwood suppliers.
- ✓ Record all rootstock and budwood movements on and off your property.





NEW: 5-step guide to creating your orchard's biosecurity plan

There is a new guide to help you strengthen your biosecurity plans.

On-orchard biosecurity is the responsibility of every person working on or visiting an orchard. High-profile pest and disease introductions over the last decade, including Psa, are reminders we must always be biosecurity aware.

The new 5-step guide is a set of measures designed to protect a property from the entry and spread of pests and diseases. It has been developed to provide guidance, help identify risks, and how to address them.

Use the guidelines to develop your orchard biosecurity plan. Identify and prioritise biosecurity practices that are relevant to your orchard/property and that can be implemented every day.

The guide is free from KVVH – email info@kvh.org.nz for a posted copy.

High-risk pest season ends

Since the start of the high-risk season in September 2018:

- ✓ There have been 212 live BMSB finds mostly on ships and in personal effects, originating in the USA and Italy
- ✓ There have been 13 fruit fly interceptions, all found either in cargo or on products being carried by air passengers
- ✓ Since 13 February 13 male fruit flies have been found across three suburbs in Auckland and a response in Northcote continues. The kiwifruit industry has contributed 260 staff days to on-the-ground efforts!

Be on the lookout for BMSB over winter

The BMSB is a pest that can hibernate and infest homes over winter, in the thousands. It stinks when crushed and is almost impossible to get rid of. If you see one, don't kill it. Catch it, take a photo, and call MPI on 0800 80 99 66.



Unusual symptoms

Be on the lookout and report any unusual pests or vine symptoms as soon as you spot them. The sooner KVVH and the Ministry for Primary Industries (MPI) know about anything new, the more we can do to help.

When information about unusual symptoms is reported to KVVH (by growers, contractors, packhouse staff and others visiting orchards) it is then looked into to be sure that any biosecurity risk is identified, managed and the growers involved are well supported if any further action needs to be taken.

- ✓ Add **MPI (0800 80 99 66)** and **KVVH (0800 665 825)** to your phone contact list.
- ✓ Visit the KVVH website to look at recent reports, including images of unusual symptoms.

KVVH offers a range of ways for you to keep up-to-date with all things related to kiwifruit biosecurity and vine health:

- ✓ Email info@kvh.org.nz to sign up to our fortnightly e-news Bulletin, delivered directly to your mailbox.
- ✓ You can also email to request the monthly Snapshot summary of key information that you can re-produce for staff or customers.
- ✓ Pop in and see us in our new office at 25 Miro Street (ground floor of the new Zespri building)

