



KNOW YOUR ENEMY

Biosecurity risk is everyone's risk

- Fruit importers can be impacted by biosecurity incursions too, not just growers
- Movement controls can severely restrict a business's ability to send fruit around NZ
- The earlier an organism is detected, the less disruptive the response is likely to be for those impacted
- The importation of fresh produce is one of several pathways that organisms can enter NZ
- Importers have an opportunity to detect suspicious pests early, playing a key role in the national biosecurity system

WHAT CAN YOU DO?



1

Inspect all incoming goods

Containers, packing materials and fruit for the presence of any unwanted organisms



2

Dispose of waste carefully

This could be contaminated so treat it as so. Don't dump any fruit or packaging materials near kiwifruit. Pests like White Peach Scale don't move far and rely on someone to dispose of them near a host - don't be that someone!



3

Report all finds to the MPI hotline on 0800 80 99 66

Brown Marmorated Stink Bug

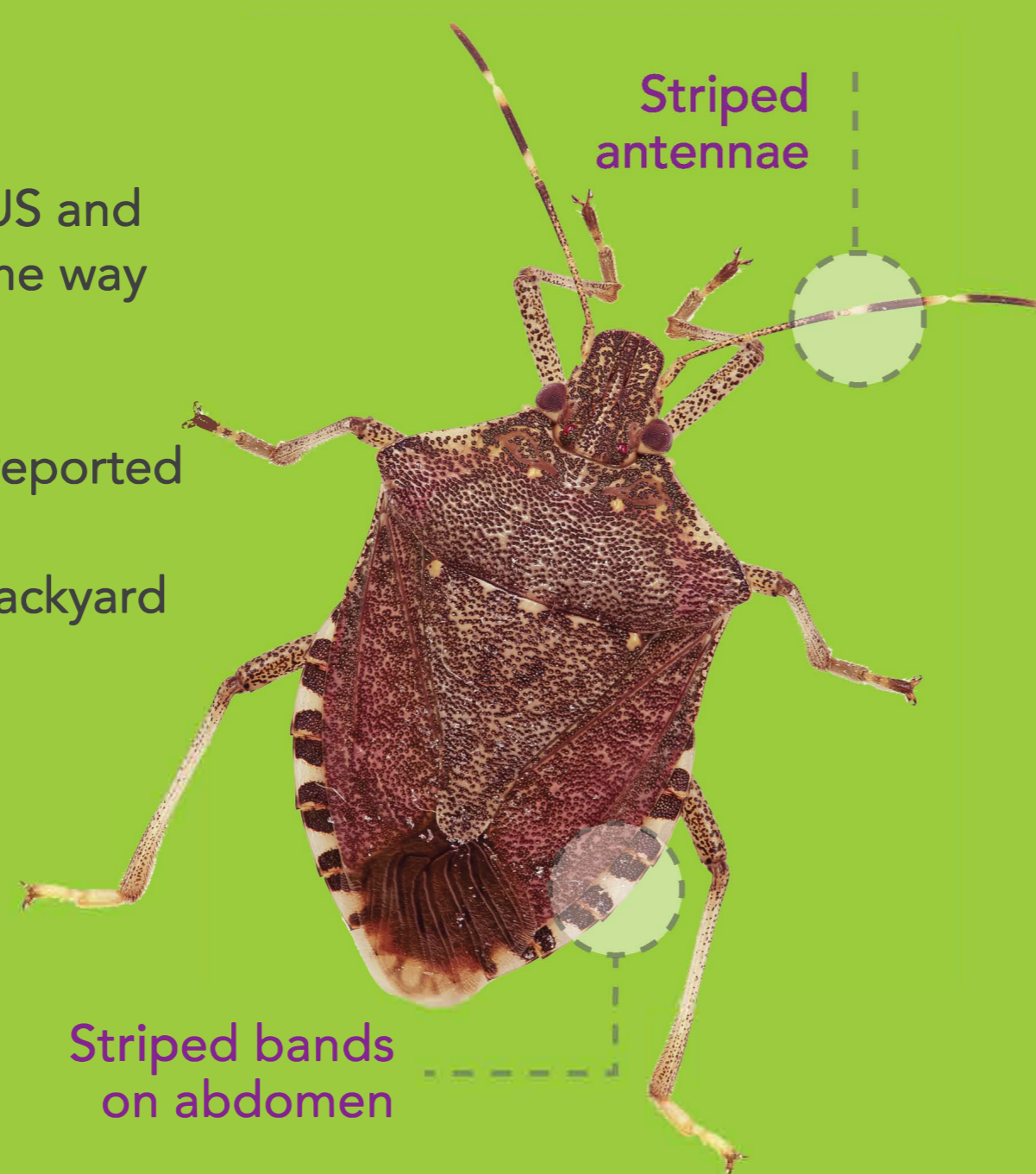
- One of the world's most significant biosecurity threats
- Rapidly spreading through the US and Europe and creating havoc on the way

IMPACTS

- Up to 30% fruit loss in kiwifruit reported
- Infests houses in large numbers
- Wide host range – will impact backyard and commercial fruit

WHAT TO LOOK FOR:

- Size – about 2cm, size of a \$1 coin (larger than NZ species)
- Distinctive striped antennae and abdomen
- A hitchhiker which can arrive in packaging and containers



White Peach Scale

- A serious biosecurity threat to the NZ kiwifruit and stonefruit industries
- Likely to establish in NZ as our climate is known to be suitable with plenty of host material

IMPACTS

- Up to 20% fruit loss reported on kiwifruit orchards in Latina, Italy in some years
- Difficult to control
- Impacts also likely to home back gardens, as it has a host range of over 300 species

WHAT TO LOOK FOR:

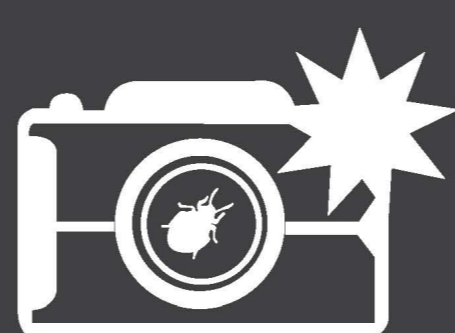
- Adult female is immobile on host plant
- Oval shape, 2 - 2.5mm
- Likely to be found attached to fruit, especially imported kiwifruit



IF YOU FIND ONE OF THESE...



CATCH IT



SNAP IT



REPORT IT

CALL MPI HOTLINE 0800 80 99 66