

## Fact Sheet:

# Queensland Fruit Fly

## *Bactrocera tryoni*

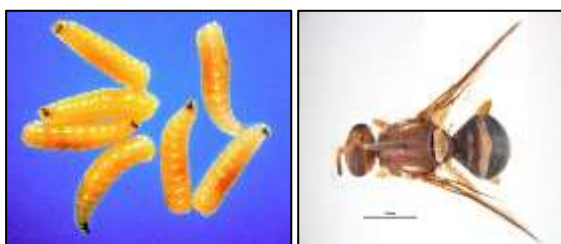
Queensland Fruit Fly (QFF) is a very serious pest of a wide variety of hosts and is a particular threat to northern NZ. Damage levels can be up to 100% of unprotected fruit. In addition to physical damage QFF inflicts economic damage through loss of market access, and costs associated with quarantine and monitoring.

### Identification

The adult female is approximately 6-8mm long with a 10-12mm wingspan. The wings are mostly transparent, marked with brown and the fly is reddish brown with yellow markings.



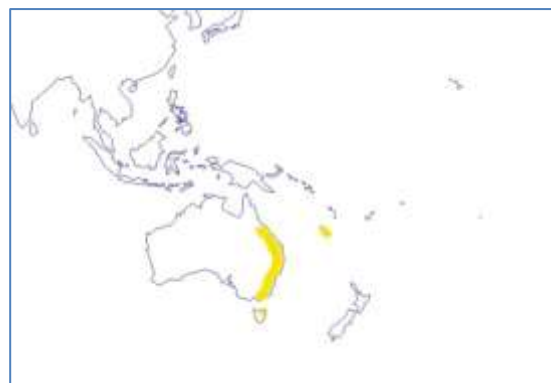
Eggs are small <1mm long, white and banana shaped. Larvae grow to 6-8mm long and are pale yellow.



### Distribution and Climate Range

Queensland Fruit Fly is indigenous only to Australia, but has the potential to establish populations in other tropical areas. It is the major fruit fly pest species in Eastern Australia and occurs in large populations.

It is also established in New Caledonia and the Austral Islands. It is usually found in the warmer areas of Australia but has been found in Tasmania indicating that adult fly may be able to establish in New Zealand especially in the warmer regions.



Distribution of Queensland Fruit Fly shown in yellow

### Signs and Symptoms

Queensland Fruit Fly are most active in warm, humid conditions and after rain, they might be seen walking on the undersides of leaves or on maturing fruit.

Damage to fruit results from eggs being laid in fruit, feeding by the larvae, and decomposition of plant tissue by secondary microorganisms.

### Control

New Zealand has a fruit fly surveillance program that has been operating for almost 20 years and involves over 7500 traps nationwide. There have been 9 recorded fruit fly interceptions since 1989 of which 6 were the Queensland fruit fly, including the 3 most recent in 2014 and 2015. These interceptions resulted in increased trapping surveillance surrounding the location and have successfully prevented a population establishing.

### What should you do if you think you have seen this pest?

Phone:

**MPI - 0800 80 99 66 or KVH - 0800 665 825**

*Kiwifruit Vine Health Incorporated (KVH) makes no warranty or representation as to the accuracy or completeness of the information, photographs or other published material in this publication. KVH shall not be liable to any person for loss, injury or damages arising from a person's reliance on the published material. Published material authored by a person other than KVH reflects the view of the author and not necessarily the view of KVH. The published material may be subject to copyright and shall not be reproduced in any manner without first obtaining the permission of KVH.*