

## Fact Sheet:

# Spotted Wing Drosophila

## *Drosophila suzukii*

Spotted-wing drosophila (SWD) lay eggs in ripening fruit making it soft and unmarketable. The SWD is a serious threat to fruit crops in every country it has established in resulting in major economic costs due to control, crop destruction and market access implications.

### Identification

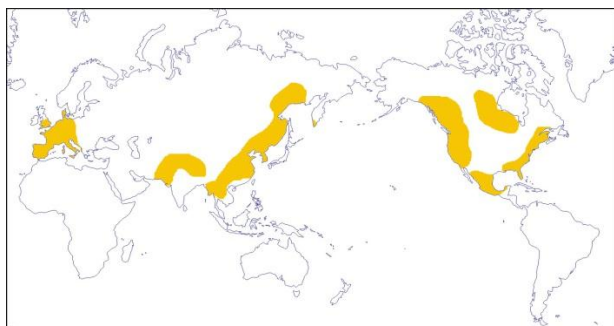
SWD are small yellowish brown flies with red eyes, 2 to 3 mm in length. The most distinguishable trait is that adult males have a black spot towards the tip of each wing. Larvae are milky white, cylindrical with black mouth parts and between 1 to 6 mm in length.



Adult SWD fly with black wing spots (left) and larvae (right)

### Distribution and Climate Range

SWD is native to Southeast Asia and is undergoing a rapid range expansion in North America and Europe.

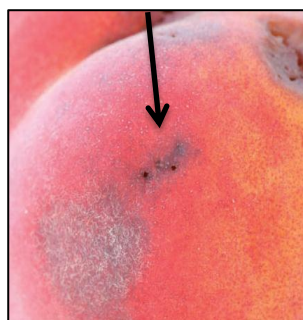


Distribution of SWD shown in yellow

Adults are active above 10°C and thrive in temperatures up to 25 °C making New Zealand a suitable climate for this organism.

### Signs and Symptoms

Although most vinegar flies attack damaged or rotting fruit, SWD attack ripening fruit making them a much more serious pest. SWD have a wide range of hosts, including kiwifruit, and larvae inflict damage by feeding on the pulp inside fruit. Infested fruit begins to collapse around feeding site causing a visible blemish on the fruit. Holes the size of pin pricks from egg laying are evident in the soft area of the fruit. Secondary infections result in rotting. Before larval feeding the presence of eggs is difficult to detect and may result in inadvertent spread.



Pin prick holes visible as a result of egg laying in a peach.

### Control

SWD is a mobile pest which can fly within a local area, however long distance spread is likely to be by the movement of infested fruit. Traps can be used for surveillance monitoring and if an eradication program is required, sprays can be used in combination with destroying ripe fruit hosts.

### What should you do if you think you have seen this pest?

Phone:

MPI - 0800 80 99 66 or KVH - 0800 665 825

*Kiwifruit Vine Health Incorporated (KVH) makes no warranty or representation as to the accuracy or completeness of the information, photographs or other published material in this publication. KVH shall not be liable to any person for loss, injury or damages arising from a person's reliance on the published material. Published material authored by a person other than KVH reflects the view of the author and not necessarily the view of KVH. The published material may be subject to copyright and shall not be reproduced in any manner without first obtaining the permission of KVH.*