



Psa-V SYMPTOMS GUIDE

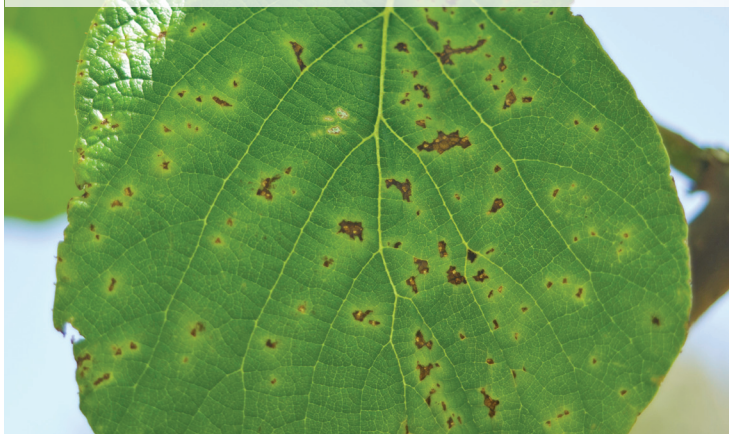
www.kvh.org.nz

Leaf symptoms

Dark, irregular spots filling inter-vein areas



Spots with surrounding halo



Spots with no halo



Spots with surrounding halo



Spots on strung cane with halo



Spotted leaves starting to curl



Infected flower buds



If you find Psu-V symptoms

Check any shoot or cane wilting/dieback is not a result of physical damage, eg pruning/wind damage.

Then contact your Packhouse Psu Manager to:

- confirm symptoms
- arrange sample collection and testing
- advise further actions.

For information on removal and disposal of infected material:

- refer to your Packhouse Psu Manager or the KVH website at www.kvh.org.nz/vine_removal.

Growers identifying potential Psu-V symptoms for the first time on their orchard are obligated under the NPMP to report them within 48 hours to their packhouse or to KVH on 0800 665 825.

Dieback symptoms

Shoot die-back



Cane collapse



Die-back with shrivelled fruit



Exudate symptoms

Red/orange exudate



Red/orange exudate

Image: Plant & Food Research



White exudate

Image: Plant & Food Research



Contacts

Packhouse Psu Manager

Name:

Phone:

Grower support

- **NZKGI:** 0800 232 505
- **Financial Advice:** 07 574 7139
- **Budget Advisory Services:** 07 578 0969
- **Work and Income:** 0800 559 009
- **Depression Helpline:** 0800 111 757

www.kvh.org.nz

Kiwifruit Vine Health Inc :: P 0800 665 825 :: E info@kvh.org.nz