



Plant & Food
RESEARCH
RANGAHAU AHUMĀRA KAI



or Plant & Food Research Limited

Product Testing Update

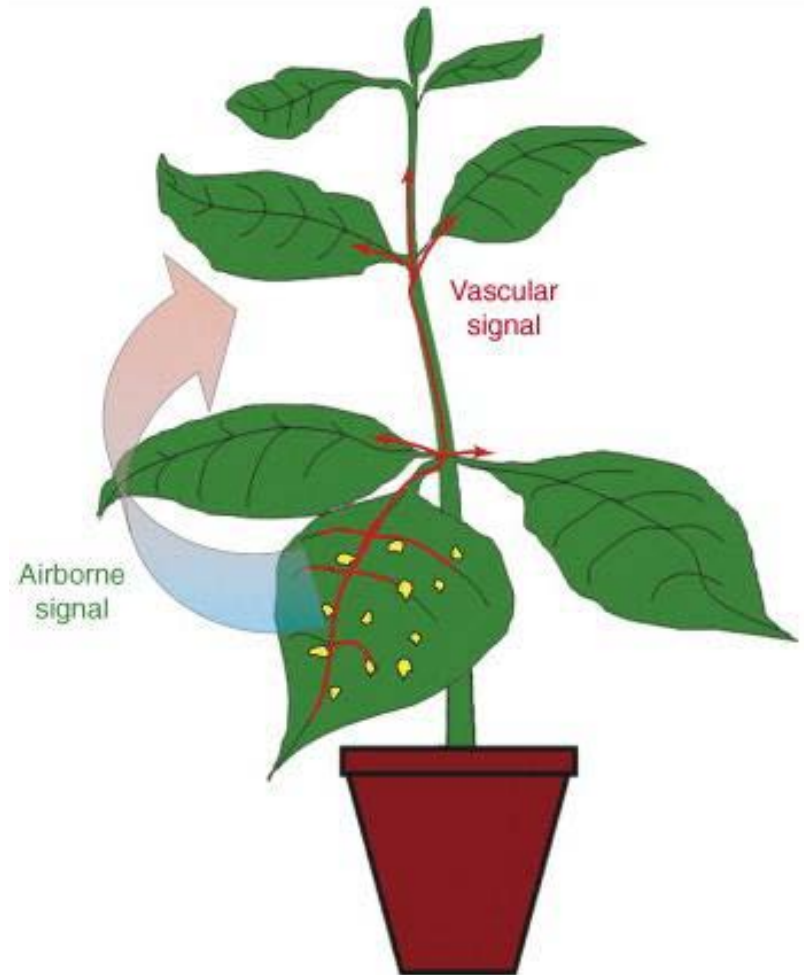
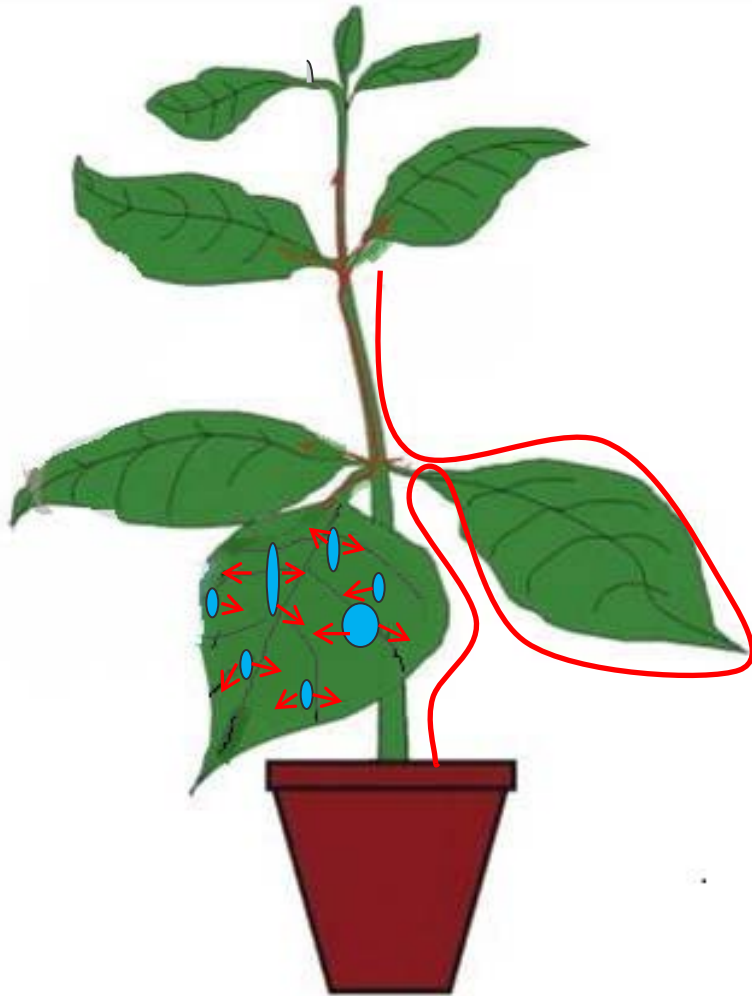
J. Vanneste & J. Bengé
Te Puke 22 November 2011

The project so far...

Needed to find among hundred of products those which are the most efficient and more consistent in reducing incidence of Psa.
Needed to do it fast and on plant material available.



The different products tested for control of Psa



The project so far...

For high turn over: high inoculum and assessment on leaf spots only



1 = 10 %



2 = 25 %



3 = 50 %

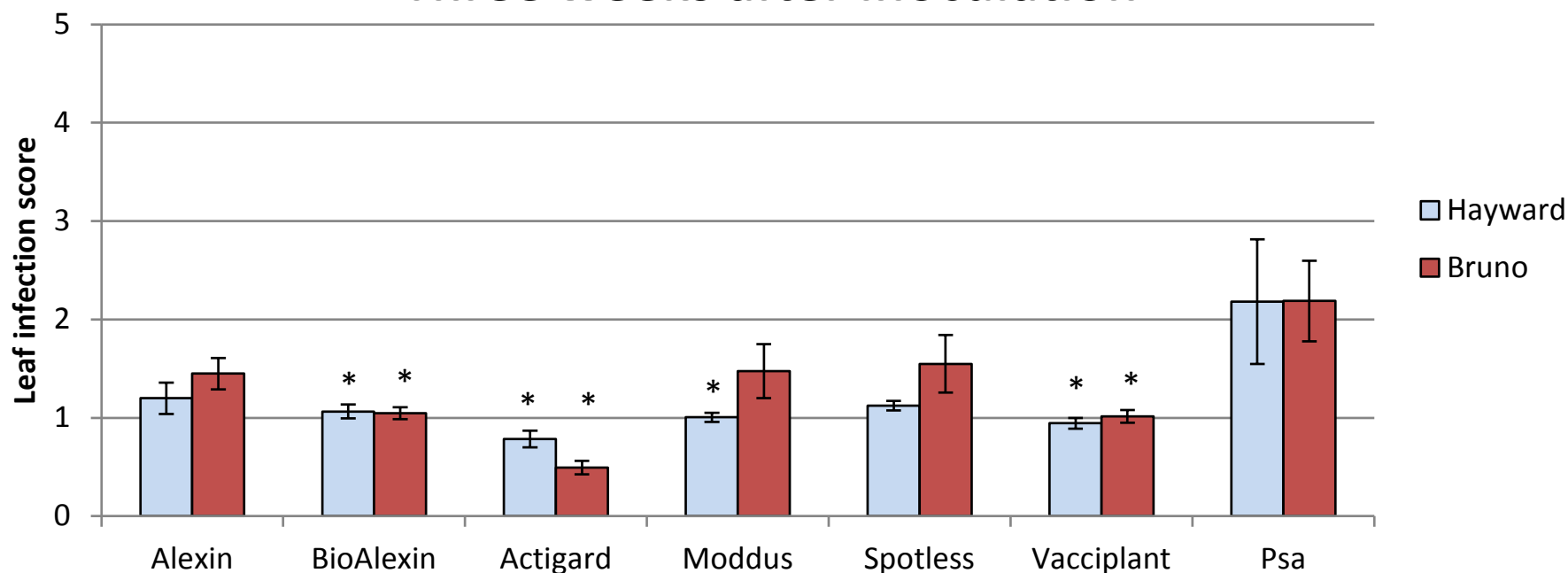


4 = 75 %



Latest results

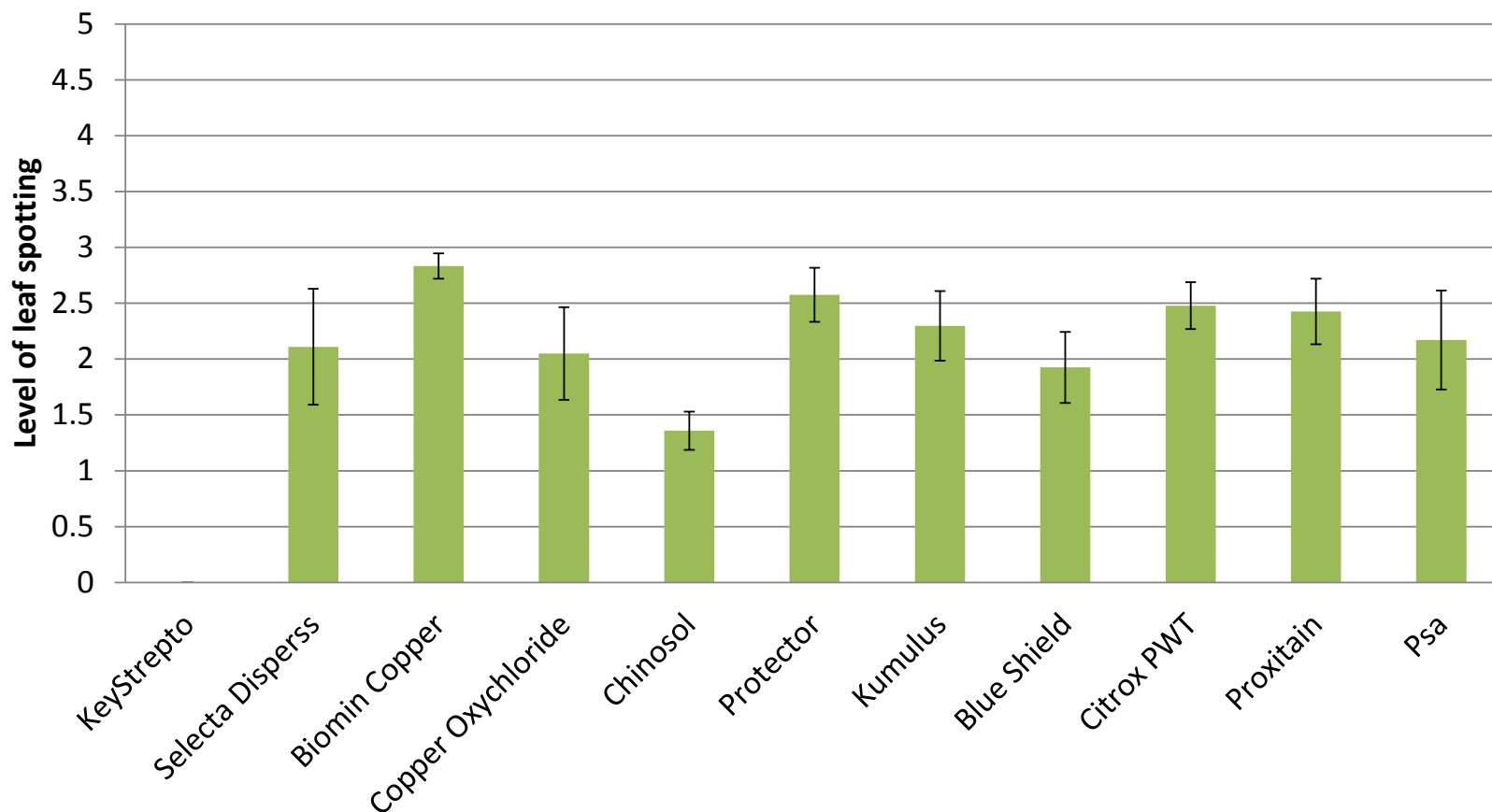
A. deliciosa Three weeks after inoculation



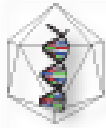
* Statistically significantly lower leaf infection compared with the Psa-V inoculated control

Latest results

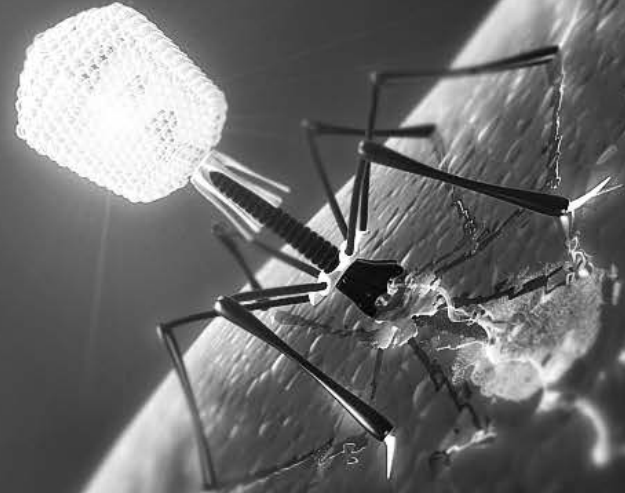
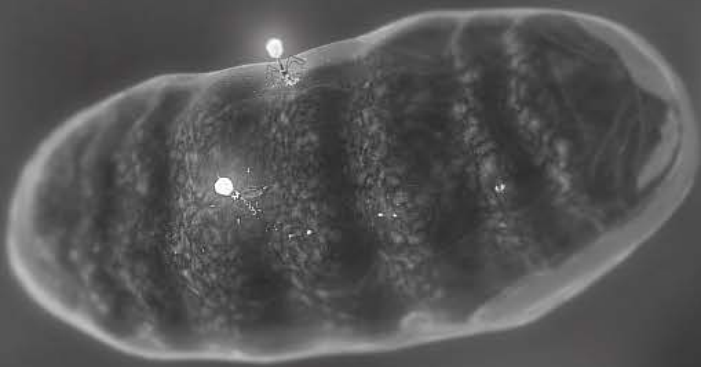
Palmerston North Exp 10 - Bruno
Final 3 Wk Assessment



Bacteriophage control of Psa-V

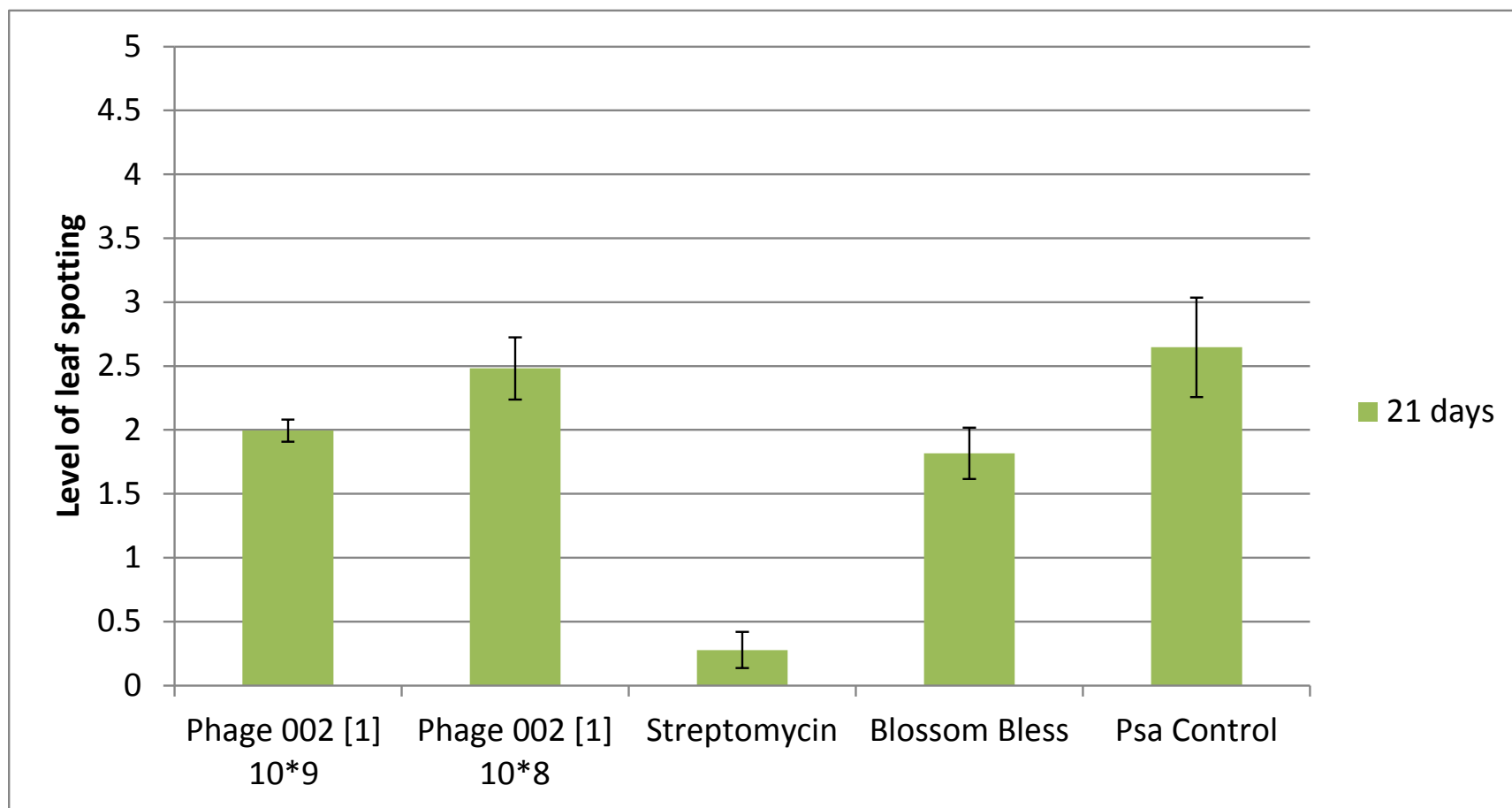


OMNILYTICS™
THE PHAGE COMPANY



Latest results

Hayward Seedlings



Field Trials

- A site has recently been identified in Te Puke. Consent was required from immediate orcharding neighbours and MAF as controlled application of an 'unwanted organism' (i.e. Psa-V) involved.
- Psa free plants being used from outside of Te Puke
- Initially, 3 levels of Psa-V have been applied to plants with the aim of identifying an appropriate level to use for product testing
- Product testing to begin early December
- Criteria for selecting products: **Market Access Potential, Commercial Potential, Regulatory Status in NZ, CPP Status, Efficacy in Class, Current industry usage**

Field Trials



Greenhouse testing

First phase of product testing programme has led to the identification of products which can significantly reduce incidence (streptomycin, actigard) as well as other products with some level of efficacy

Next phase will evaluate products under different conditions (lower inoculum level, multiple application, different timing, combinations of products and mode of action,...)

Field testing

Testing efficacy of products under field conditions has commenced



DISCLAIMER

Unless agreed otherwise, The New Zealand Institute for Plant & Food Research Limited does not give any prediction, warranty or assurance in relation to the accuracy of or fitness for any particular use or application of, any information or scientific or other result contained in this report/presentation. Neither Plant & Food Research nor any of its employees shall be liable for any cost (including legal costs), claim, liability, loss, damage, injury or the like, which may be suffered or incurred as a direct or indirect result of the reliance by any person on any information contained in this report/presentation.

LIMITED PROTECTION

This report/presentation may be reproduced in full, but not in part, without prior consent of the author or of the Chief Executive Officer, The New Zealand Institute for Plant & Food Research Ltd, Private Bag 92169, Auckland Mail Centre, Auckland 1142, New Zealand.

CONFIDENTIALITY

This report/presentation contains valuable information in relation to the Psa research programme that is confidential to the business of Plant & Food Research and ZESPRI Group Limited. This report/presentation is provided solely for the purpose of advising on the progress of the Psa research programme, and the information it contains should be treated as "Confidential Information" in accord with the Plant & Food Research Agreement with ZESPRI Group Limited.