

AUGUST 2021

KVH Snapshot

NEWS YOU CAN USE



Prepared by
KIWIFRUIT VINE HEALTH
WWW.KVH.ORG.NZ

Ko Tātou
THIS IS US BIOSECURITY 2025

Annual Update out now



The KVH Annual Update for 2020/21 is out now, detailing key work over the last 12 months, including research and readiness activities in preparation for some of the biggest threats to kiwifruit, and the work we do to increase awareness and commitment to biosecurity.

Growers have told us that they are interested in knowing more about what we do across the biosecurity system so this year we have focused our stories on pre-border, border, and post-border.

[Read more here](#)

Restrictions on moving orchard equipment



A reminder that movement of any kiwifruit orchard equipment intended to go from the North Island Recovery region to a South Island Exclusion region or Controlled area is restricted and can only move with permission from KVH.

South Island growers are very aware of the risk of Psa potentially being introduced via contaminated tools, tractors, or sprayers. North Island growers and machinery dealers need to comply with movement control rules.

[Read more here.](#)

AGM results



The KVH Annual General Meeting (AGM) took place Wednesday 18 August. Thank you to all those who were able to attend the virtual event and thank you also to everyone for voting.

All Resolutions were passed at the AGM.

[Read more here.](#)

The KVH Snapshot provides you with brief biosecurity messages that you can reproduce and share. Contact lisa.gibbison@kvh.org.nz for more information related to the topics listed, or to add others to the Snapshot distribution list.

Postponed grower biosecurity day

Unfortunately the KVH and Zespri grower biosecurity day scheduled for Thursday 2 September has had to be postponed to due COVID-19 restrictions. We are working on scheduling a new date (likely in November) and will let you know once this is confirmed.

At the event we'll share with you our research updates from the last 12 months, provide an update from across the biosecurity research space, and work alongside you to help shape our research priorities going forward.

[Read more here.](#)

Are you a biosecurity quiz master?

KVH was a proud supporter of the Bay of Plenty Young Grower event, providing a biosecurity quiz to the eight competitors on the day – congratulations to Katherine Bell (Avocado Grower Representative, Trevelyan's) who was the winner, after a tiebreak question.

Have a go at the quiz put to the competitors, who delighted us with their biosecurity expertise. How does your knowledge compare?

[Read more here.](#)

Future focus at KiwiNet meeting

About 40 people from across the kiwifruit industry came together for KiwiNet recently.

This first industry champion workshop of 2021 included a special presentation from 'the pea weevil lady' Karen Williams, who talked about the pea weevil eradication in the lower North Island. Former Horticulture NZ Chief Executive Mike Chapman was there too, offering his insights on the future of biosecurity.

[Read more here.](#)

Research shows Psa causes Gold3 bud rot

A two-year study designed to fill knowledge gaps around Gold3 bud rot has identified Psa as the cause of infection. Similar to Hayward, Psa infection was seen to start on the outside of Gold3 flower buds and then move inward to internal bud parts.

[Read more here.](#)

Linda Peacock crowned a national winner

We couldn't be prouder and more delighted for our teammate Linda Peacock who was one of eight overall winners recognised in the Syngenta Growth Awards earlier this month.

Linda is the ninth New Zealand winner since the awards were launched and she was recognised in the 'Sustainability' category for her commitment to always looking for ways to improve, to share insights and ideas, and to work for the good of the whole industry.

[Read more here.](#)

Preparing for Spotted Lanternfly

KVH staff attended the first in a series of workshops on preparedness for the potential arrival of Spotted Lanternfly (SLF) in New Zealand.

SLF is a serious invasive pest, feeding on over 70 different plant species including kiwifruit and is one of our most unwanted threats. Hosted by Plant & Food Research, the workshop was based around a webinar and discussion on SLF impacts and management with Julie Urban from Pennsylvania State University.

[Read more here.](#)

Tissue culture pathway update

In 2019 KVH developed a pathway standard to enable kiwifruit plant material to move from a Recovery region into Exclusion and Containment regions via tissue culture, with negligible risk of introducing Psa into the region.

The first plants entered this process in May 2019 and have been released from quarantine after passing all testing requirements and being confirmed Psa not detected at each stage.

[Read more here.](#)

Where weeds grow

Every time you visit a farm, orchard, or nursery you MUST clean your footwear or leave it behind. Anything less means potentially spreading weeds (or worse), as this example from the USA demonstrates.

[Read more here.](#)

Prosecution for illegal plant movements

A Whangarei kiwifruit grower has been fined \$17.5k after pleading guilty to charges relating to breaking biosecurity rules designed to protect the kiwifruit industry from harmful diseases.

The charges relate to breaches under the Biosecurity Act, including the illegal movement of plant material, where the grower knowingly moved material from Katikati, a Recovery region, into the Whangarei region, at the time a Containment region.

[Read more here.](#)

Kiwifruit research at national BMSB event

KVH took part in the national Brown Marmorated Stink Bug (BMSB) Symposium this month in Napier, which was a great opportunity to bring together the New Zealand research community and better prepare New Zealand for this pest.

We were lucky to have Dr. Tracey Leskey from the United States Department of Agriculture (USDA) join remotely as the keynote speaker to discuss latest research efforts in the USA to control BMSB.

[Read more here.](#)

Call for research and survey sites

KVH would like to hear from Northland (Kerikeri and Whangarei) and South Island (Motueka and Nelson) growers who would like to be included in the survey of Phytophthora pathogens in kiwifruit orchards throughout New Zealand.

We're also looking for help in identifying trial sites for inclusion in a Zespri/KVH Psa research project designed to test the relative efficacy of a range of Psa spray programme options through spring.

[Read more here.](#)

Opotiki weather station

KVH is working with Scott Instruments Ltd to reinstate the Opotiki weather station. Data was interrupted Tuesday 20 July due to theft of the station solar panel and data monitoring equipment, as well as damage to station sensors.

[Read more here.](#)

New Psa seasonal management guide



The Psa-V Seasonal Management Wall Chart 2021-22 is out now and available to view or download from the KVVH website. A printed A2 sized copy of the chart has also been included in the posted copy of the August Kiwiflier (and there'll also be a special Spotlight focus on Psa included too).

[Read more here.](#)

Winter stink bug reminders



Another winter campaign asking New Zealanders to look out for Brown Marmorated Stink Bug (BMSB) has wrapped up. Because BMSB likes to gather in enclosed spaces over the winter months, the campaign ads mostly targeted people doing indoor activities such as renovation projects. Other audiences were importers, online shoppers, and home gardeners.

[Read more here.](#)

Worrisome pet trend



In what must be one of the whackiest and worrisome emerging biosecurity trends, online sellers are hawking Giant African Snails (GAS) as pets! Biosecurity New Zealand officers are keeping their eyes peeled for the pest following increased social media interest. Luckily, it's hard to miss because it can grow up to a massive 20cm long.

[Read more here.](#)

Bamboo borer found and managed



Thanks to an observant kiwifruit grower, a recent detection of Bamboo Borer in imported stakes from China did not go undetected.

After noticing an unusual pest in his bamboo stakes during the planting of new vines the grower immediately reported the find to the Biosecurity New Zealand hotline on 0800 80 99 66, and sent a sample to the Plant Health and Environment Laboratory (PHEL) for ID.

[Read more here.](#)

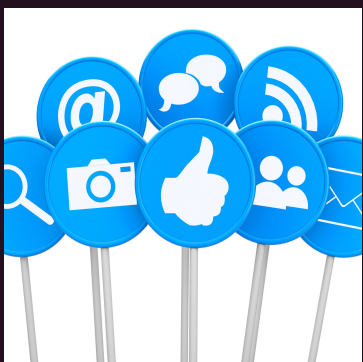
Trans-tasman fruit fly talks



KVH joined others from the New Zealand Fruit Fly Council and representatives from the Australian National Fruit Fly Council online recently to talk about fruit fly management, market access, policy, sector capability and Sterile Insect Technology (SIT).

[Read more here.](#)

Help spread the biosecurity word online



You, your family, and friends can follow KVH on Facebook, Twitter, and YouTube social media pages. We use the pages to engage with more people across the wider kiwifruit industry and share biosecurity messages with the public about upcoming events.

[Read more here.](#)