

KVH Snapshot

NEWS YOU CAN USE



Proposed
Pathway Plan

HAVE
YOUR
SAY

Proposed plan for managing biosecurity risk



Biosecurity risk is one of the greatest strategic threats to the kiwifruit industry and KVH is seeking feedback on a proposal for a new regulatory framework to better manage this risk. After asking for early feedback on the high-level concept of a Pathway Management Plan, we are now seeking input from the industry on the detail of the full proposal.

[Read more here.](#)

Proposed plan roadshow reminder



Growers are invited to special presentations in all growing regions about KVH's proposed new Pathway Management Plan. Running until 28 September, the events are focused on the proposed new regulation framework to better manage biosecurity risk to the kiwifruit industry. Everyone is welcome and we encourage you to attend and share your views.

[Read more here.](#)

Mandatory monitoring underway



All growers in Exclusion regions and all growers with 'Not Detected' orchards in all regions are required to carry out a round of Psa mandatory monitoring between 15 September and 15 October, with results due to KVH by 31 October. To assist growers, an online monitoring form is available.

[Read more here.](#)

The KVH Snapshot provides you with brief biosecurity messages that you can reproduce and share. Contact lisa.gibbison@kvh.org.nz for more information related to the topics listed, or to add others to the Snapshot distribution list.

Expansion of boundary in Kerikeri

Part of the southern side of the Kerikeri Recovery region has been extended southward by 2.5kms. The new boundary will follow State Highway 1 and State Highway 10 to include land north of these roads at Pakaraka and has been adjusted to allow movement of kiwifruit plants to a green fields development (near Pakaraka).

[Read more here.](#)

New Psa seasonal management guide

The Psa-V Seasonal Management Wall Chart 2020-21 is out now and available to view or download from the KVH website. A printed A2 sized copy of the chart was also included in the August Kiwiflier mailout. The wall chart outlines how you can use cultural methods and a protective spray programme year-round to reduce risk on-orchard, including regular monitoring, removing infected material, girdling, and seasonal spray plans.

[Read more here.](#)

Most unwanted time of the year

Fruit flies and Brown Marmorated Stink Bug (BMSB) are considered two of the biggest biosecurity threats to the kiwifruit industry and from September they are both in their highest-risk period for entry into New Zealand. A quick reminder of the damage these unwanted pests can do and what to look out for, including images, has been published.

[Read more here.](#)

Spotlight on Biosecurity Week coming soon

A reminder that biosecurity in the Bay of Plenty will be celebrated with the Tauranga Moana Biosecurity Capital (TMBC) annual Spotlight on Biosecurity Week from Monday 2 – Friday 6 November. This week is all about highlighting the importance of protecting what we love about Tauranga Moana and showcasing the awesome biosecurity work that's being undertaken across the region. There will be several different events including a kiwifruit grower biosecurity day.

[Read more here.](#)

How many eggs can a fruit fly lay?

Did you know a female Queensland Fruit Fly (QFF) can lay up to 100 eggs a day throughout her lifetime, at room temperature (when it's cold, she may produce far fewer eggs). The eggs are laid just under the surface of fruit and the maggots or larvae hatch from the egg after two to three days and start feeding on the fruit. Larvae quickly grow from 1mm to 1cm long (and look a lot like a grain of rice) when mature.

[Read more here.](#)

Stink bug trapped for the first time in the UK

At the end of August the Daily Mail in the UK reported that the Brown Marmorated Stink Bug (BMSB) has been trapped for the first time in Britain, at a nature reserve in Essex.

[Read more here.](#)

Movement of mature kiwifruit plants

The kiwifruit industry is undergoing rapid growth and some growers who have double or triple planted Gold3 vines to get quick canopy cover may consider removing some of these vines to increase footprint and optimise orchard performance. These plants may be used by growers of existing orchards wanting to plant on new licensed areas.

[Read more here.](#)

Reminder of pruning and tying down timeline

Growers have been reminded that one of the requirements within the National Psa-V Pest Management Plan (NPMP) is that orchards are pruned and tied down by 1 October yearly. KVH is aware that pruning and tying down is currently being completed on some orchards.

[Read more here.](#)

Psa annual update video

Zespri and KVH hosted the annual Psu R&D update early September which saw scientists share with growers and industry key outcomes from the research portfolio to help growers refine their on-orchard Psu disease management programme. The event recording is now available.

[Read more here.](#)

Search warrant for biosecurity breaches with seeds

As published by Stuff.co.nz, selling hops on Trade Me and having prohibited seeds at home has earned a retired woman a \$4000 fine and her first convictions. The Ministry for Primary Industries (MPI) saw the offending as calculated and deliberate, and argued any harm from breaching the biosecurity system could prove irreversible.

[Read more here.](#)

Biosecurity agenda at international meeting

KVH discussed New Zealand's biosecurity activities at the International Kiwifruit Organisation (IKO) virtual meeting mid-September. Also attended by NZKGI and Zespri representatives, the annual meeting provides an opportunity for international counterparts from countries where kiwifruit is grown to share news and opportunities. KVH provided an update about progress in managing PsA in New Zealand and provided a summary of the 2019/20 season.

[Read more here.](#)

Biosecurity micro-credential enrolments open now

The Primary Industry Training Organisation (ITO), together with the horticulture industry and KVH has developed a free biosecurity micro-credential (a short, focused piece of learning) to enhance industry capability. It is designed to give an individual an understanding of biosecurity; what risks are present on their orchard/farm; how to prioritise and manage them; asks how practices can be put in place or improved; and demonstrates how to implement, monitor and review a biosecurity plan.

[Read more here.](#)

Wanted: Te Puna weather station host

In the last Snapshot we mentioned we're looking for a new home for the Te Puna weather station, to support local growers. Thank you to those of you who have expressed an interest and who are talking to us about site suitability. It's not too late to get in touch if you think you have an ideal orchard site, or piece of open ground close to the current site on Snodgrass Road.

[Read more here.](#)

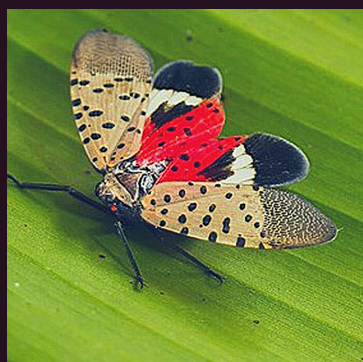
Spreading the stink bug message



The public education campaign for the current high-risk Brown Marmorated Stink Bug (BMSB) season is underway, and includes print advertising in gardening magazines and grower publications (timed to coincide with peak holiday periods when people are in gardens and likely to spot BMSB outside); digital advertising to target online shoppers (such as those using Amazon, eBay and AliExpress) and people watching TV programmes around things like border security; and MetService ads which have been high-performing in previous years.

[Read more here.](#)

Fun fact



The Spotted Lanternfly (SLF) jumps more than it flies. At just one inch long, an adult SLF can jump three metres. Three metres!! That's why their wings are often closed. They rarely need to use them because their quad strength is apparently unparalleled.

[Read more here.](#)

Free orchard signage



Good biosecurity practice includes managing risk by restricting access to orchards. As part of this you should check contact details on your orchard gate signs are up to date. KVH has produced free signage for you, highlighting the need for visitors to make contact before entering and the biosecurity risk posed by plant, vehicle, and people movements.

[Read more here.](#)