

KVH Snapshot

NEWS YOU CAN USE



BMSB spotting in the Bay



The Tauranga Moana Biosecurity Capital (TMBC) team KVH is part of has built on the national Brown Marmorated Stink Bug (BMSB) campaign to have a banner created and installed on one of the silos here in Mount Maunganui (along Hewletts Road, near the corner of Totara Street in case you're local and haven't spied it yet) – complete with giant BMSB crawling up the sides. The banner is a high traffic area and we've already had a lot of feedback about how noticeable it is.

The banner will remain in place for a few weeks, and be up for the upcoming TMBC Spotlight on Biosecurity Week which starts Monday 21 October.

KiwiNet national award finalist



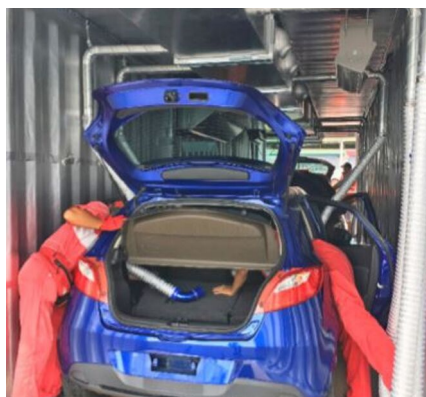
KiwiNet - the kiwifruit industry's network of biosecurity advocates and trained responders to incursions managed by KVH – has also been announced as a finalist in the industry category for the 2019 Biosecurity Awards. We're delighted to share this news because KiwiNet is made up of more than 30 organisations from across the kiwifruit industry, most of whom have contributed staff and resources to the recent fruit fly responses in Auckland, and is a true example of how much can be achieved when an industry works together as one to protect what we've got.

More good news: TMBC has also been announced as a finalist in the community award category for new projects.

Great to see the kiwifruit industry and the Bay of Plenty well represented! Winners are announced 4 November.

The KVH Snapshot provides you with brief biosecurity messages that you can reproduce and share. Contact lisa.gibbison@kvh.org.nz for more information related to the topics listed, or to add others to the Snapshot distribution list.

Managing BMSB risk this summer



With September comes the start of the Brown Marmorated Stink Bug (BMSB) season. KVH continues to advocate strongly on behalf of industry for strict controls that will make it harder for the BMSB to get here.

[Read more here.](#)

Check and clean in 60 seconds



How easy is it to check and clean your tools before going onto or between orchards? Dave Robertson, a contractor who regularly works on kiwifruit orchards shows us how quick and easy it is to do in under a minute.

[Read more here.](#)

2019-20 Psa guide out now



The Psa Seasonal Management Wall Chart for the 2019-20 season is out now and an A2 poster copy was included for growers in the latest Zespri Kiwiflier mailout. A key feature of the wall chart is the KVH Recommended Product List, which sets out the upcoming seasons approved products for protection against Psa, their year-round application rates and permitted use periods.

[Read more here.](#)

The KVH Snapshot provides you with brief biosecurity messages that you can reproduce and share. Contact lisa.gibbison@kvh.org.nz for more information related to the topics listed, or to add others to the Snapshot distribution list.

Spreading the stink bug message

KVH is involved in several initiatives to improve awareness and readiness for the Brown Marmorated Stink Bug (BMSB), including a comprehensive public education programme.

The campaign for the current high-risk season aims to lift public awareness around the damaging impacts of BMSB and increase the likelihood of early detection through passive surveillance

[Read more here.](#)

Passenger compliance up, risk down

International air travellers are less likely to get risk goods through border checks, according to a new air passenger compliance survey. The 2019 results show the overall compliance rate for passengers entering New Zealand is 98.95%.

[Read more here.](#)

Smarter science for New Zealand biosecurity

New Zealand faces increasing pressure on our biosecurity systems and needs science to deliver smarter approaches for managing risk. New Zealand's Biological Heritage National Science Challenge is a major initiative that is seeking to deliver science solutions for biodiversity and biosecurity.

[Read more here.](#)

Sharing learnings with Australia

Last month KVH attended the Plant Biosecurity Research Symposium in Brisbane, an inaugural event to share plant biosecurity research between trans-Tasman counterparts so that we can avoid duplicating efforts and identify areas for future collaboration. KVH presented on lessons from Psa and learnings for biosecurity readiness, and it was interesting to see several consistent themes come through in the presentations.

[Read more here.](#)

Kiwifruit's Most Unwanted resources

A reminder new posters and foldout flyers about Kiwifruit's Most Unwanted pests are freely available from KVH. See a copy of the poster at the end of this Snapshot.

[Read more here.](#)

Stink bug round up

The Newsroom news site has published an article and podcast on Brown Marmorated Stink Bugs (BMSB), the havoc they're wreaking overseas, and the nationwide efforts underway here to keep this unwanted and damaging pest out.

The entertaining podcast tells the history of stink bugs in Asia, the USA and Europe from a grower perspective and includes several New interviews with New Zealand experts.

[Read more here.](#)

BioGro lowers copper input limits

BioGro has confirmed that from Wednesday 11 September 2019 the limit on the use of copper-based inputs for organic production has been lowered to 3kg active copper/ha/year. This applies to all BioGro Licensees.

[Read more here.](#)

Mandatory monitoring underway

All growers in Exclusion regions and all growers with 'Not Detected' orchards in all regions are required to carry out a round of Psa mandatory monitoring from mid-September with results due to KVH by Thursday 31 October.

[Read more here.](#)

Psa monitoring window

Budbreak is well underway for most Gold3 sites and it is recommended growers complete Psa monitoring rounds to check for early signs of the diseases.

Reports from Gisborne, Edgecumbe and Opotiki regions confirm exudate is now showing in Psa cankers and some girdles for sites where Psa has been more prevalent. A few new hot spots have also been seen, often where spray programmes or hygiene have been compromised.

[Read more here.](#)

More biosecurity awareness with new travel authority

The new Electronic Travel Authority (ETA) becomes mandatory for passengers arriving from visa waiver countries from 1 October. The process will allow Biosecurity New Zealand to identify passengers that pose biosecurity risk earlier than they do now.

[Read more here.](#)

Videos from Psa research day



Continuing the battle against Psa, Zespri's innovation team and KVH hosted a Psa R&D update in August which saw scientists share with growers and industry insights into their research on the disease. Videos of each presentation are now available on the Zespri Canopy website.

Read more here.

Fruited supporting biosecurity awareness



In early September KVH was invited to the Fruitfed Supplies (part of PGG Wrightson) kiwifruit and subtropical Crop Sector Group technical update to share updates on kiwifruit industry biosecurity threats and readiness efforts.

Read more here.

Travelling overseas these school holidays?



Kiwifruit growers travelling during the school break (starting Friday 27 September) have been reminded they may find they experience more interventions when returning to New Zealand. This is because Biosecurity New Zealand border staff consider occupation as part of their risk assessment.

Read more here.



KIWIFRUIT'S MOST UNWANTED

Kiwifruit Vine Health (KVH) undertakes readiness and response planning to minimise the impact of future biosecurity incursions to the kiwifruit industry.

The following organisms are considered the highest risk to the kiwifruit industry, based on the likelihood of them getting here and establishing; and the potential production and market access implications should this occur.

Our next incursion won't necessarily be an organism on this list however. We all need to be on alert for any unusual pests or plant symptoms and maintain on-orchard biosecurity best practice ALL the time.

FRUIT FLIES

Queensland, Oriental, Mediterranean

- High likelihood of entry – have crossed our borders many times.
- Production impacts for a range of horticultural crops, but considered low for kiwifruit.
- Severe market access restrictions, particularly for Queensland Fruit Fly which is not present in most major kiwifruit markets.



Risk Months: Sep – June
I can enter NZ hiding on:



BRAZILIAN WILT

Ceratocystis fimbriata

- Soil-borne pathogen causing damage to kiwifruit in Brazil – reports of up to 50% vine loss.
- Vine death can occur extremely rapidly after expression of symptoms. Hayward on Bruno rootstock also affected.
- No known effective treatments.
- May be eradicable with good biosecurity practices and if detected early.



Risk Months: Year Round
I can enter NZ hiding on:



BROWN MARMORATED STINK BUG

- Pierces kiwifruit resulting in fruit drop and rot. Fruit loss is typically 5-10% but up to 30% on worst blocks.
- Extremely difficult to eradicate – early detection is essential.
- Major nuisance pest overwintering inside houses in huge numbers.
- High likelihood of entry as a hitchhiker on shipping containers, cars, machinery and luggage.



Risk Months: Sep – Apr
I can enter NZ on:



SPOTTED LANTERNFLY

- Attacks over 70 host species, including kiwifruit – eradication efforts overseas have been unsuccessful.
- Production impacts from extensive feeding resulting in oozing wounds, wilting, and especially sooty mould growth which prolific.
- Hitchhiker pest that is hard to control – tends to fly out of orchards when sprayed and return later.



Risk Months: Sep – May
Look out for my eggs on:



PSA NON NZ STRAINS

- NZ has one form of PsA – others exist internationally and could cause severe impacts if they get here.
- PsA in Japan and Korea appears to be more virulent to Hayward than the NZ form of PsA.
- New PsA strains could be more virulent to 'PsA tolerant' cultivars.
- May be difficult to distinguish from 'common' PsA so best practice is not to spread any form.



Risk Months: Year Round
I can enter NZ hiding on:



WHITE PEACH SCALE

- Regularly intercepted on imported fruit. Therefore no imported fruit should be taken on to orchards as a precaution.
- Up to 20% production losses reported on Italian orchards.
- NZ environment considered favourable for establishment.



Risk Months: Nov – Mar
I can enter NZ hiding on:



VERTICILLIUM WILT

- In susceptible kiwifruit cultivars infection always leads to plant death, which occurs suddenly.
- Many strains worldwide – only Chile has reported a strain virulent against kiwifruit.
- Good biosecurity hygiene practices are essential to manage spread of this soil-borne pathogen.



Risk Months: Year Round
I can enter NZ hiding on:



INVASIVE PHYTOPHTHORAS

- Known as the plant killers – a group of significant plant pathogens and a major threat to all plant sectors.
- Species have caused significant impacts to kiwifruit offshore. Many other known and unknown species could also cause impacts under certain conditions.
- Easily spread, particularly with plant material movements.
- Can spread in plants showing no symptoms.



Risk Months: Year Round
I can enter NZ hiding on:

