

MAY 2019

# KVH Snapshot

NEWS YOU CAN USE



Prepared by  
KIWIFRUIT VINE HEALTH  
[WWW.KVH.ORG.NZ](http://WWW.KVH.ORG.NZ)

**Ko Tātou**  
THIS IS US BIOSECURITY 2025

## Step-up in Northcote fruit fly response



Another Queensland Fruit Fly (QFF) has been found within the current Northcote controlled area, bringing the total to eight over the past three and half months. On the ground efforts in the suburb have stepped-up, with bait placed on fruit trees to attract and kill adult flies, in particular females. Restrictions on the movement of fruit and vegetables remain in place, and trapping and the collection of fallen fruit in some areas continues.

[Read more here.](#)

## KiwiNet making a difference fighting fruit flies



There have now been just over 200 staff days so far contributed to the Auckland fruit fly response by KiwiNet members, who have used their skills and expertise to help with trapping, ground surveying, fruit collection, and public awareness activities. Three profiles of team members have been published on the KVH website so far - there's Lori from OPAC, Sheryl from EastPack and Marlene from Trevelyan's.

[Read more on the KiwiNet web page here.](#)

## Visit us at Fieldays



The KVH team will be in the Zespri hub at Mystery Creek Fieldays, Hamilton, Wednesday 12 June to Friday 14 June. Pop in and see us - we're keen to discuss any questions, issues, or suggestions you have about biosecurity. We'll also be presenting between 12.00 and 12.30pm each day as part of the Zespri programme which includes a seasonal update, notes from NZKGI, and a lunchtime sausage sizzle.

We look forward to seeing you there.

The KVH Snapshot provides you with short, interesting, biosecurity messages that you are welcome to reproduce and share. Contact [lisa.gibbison@kvh.org.nz](mailto:lisa.gibbison@kvh.org.nz) for more information and images related to the topics listed, or to add others to the Snapshot distribution list.

## BMSB season comes to a close

Latest data in the April KVH risk update shows since the start of the high-risk season in September 2018 there have been 212 live Brown Marmorated Stink Bugs (BMSB) detected. The update also includes surveillance information and an update about ongoing work alongside Australian officials to align activities.

[Read more here.](#)

## Locals thanked for response support

KVH and other members of the fruit fly response team were in Auckland for the first weekend in May running several thank you events.

The response team had a presence at the Otara markets on Saturday, and the Northcote shopping mall and Devonport ferry terminal on Sunday.

[Read more here.](#)

## The worst invasive species in 150 years

The Spotted Lanternfly is considered by the US Department of Agriculture to be the worst invasive species the US has seen in more than a century. The pest threatens products worth \$18 Billion to Pennsylvania alone and is on the list of KVH's Most Unwanted due to the risk it poses to the kiwifruit industry.

[Read more here.](#)

## Independent biosecurity review released

In early May the Ministry for Primary Industries (MPI) announced the findings of an independent review of its biosecurity passenger and mail controls at the border.

The review was commissioned after fruit fly was first detected in Auckland earlier this year and overall has found that border services in the mail and passenger pathways protect New Zealand well. However, it notes some significant challenges the border is under and that ongoing improvement is essential. Several recommendations have been made.

[Read more here.](#)

## KVH AGM

KVH's Annual General Meeting (AGM) will take place at 9am on Wednesday 24 July 2019, at the Trustpower Arena in Mount Maunganui. This is a public meeting and anyone who is interested is most welcome to attend.

[Read more here.](#)

## Nominations for KVH directors

The KVH Board is calling for nominations for one grower director for a term of three years to the KVH Board. Nomination forms can be downloaded from the KVH website.

[Read more here.](#)

## New research published

Scientific research publications that drive KVH policies and management advice are added to our website as they are finalised.

Reports added over the last month include 'Advancing EMix: The efficacy of Emix against PsA'; and several pest reviews.

[Read more here.](#)

## Budwood registration and supply

Growers have been reminded KVH best practice advice is to source budwood from own orchards wherever possible, to reduce the likelihood of spreading PsA or other pathogens.

Growers supplying budwood off their orchard need to register annually with KVH and complete a Budwood Risk Management Plan.

[Read more here.](#)

## Stinky pest thwarted

The BMSB Council (a group of horticulture-wide organisations who have come together to help stop the damaging hitchhiker making a home here) have reminded the public of the production and lifestyle impacts of BMSB and the work being done to keep it from establishing here.

[Read more here.](#)

## Help look out for wild kiwifruit vines

As we head into winter, growers have been asked to look out for wild kiwifruit vines in any areas of bush, scrub or forestry near kiwifruit orchards.

[Read more here.](#)

## Beetle to control moth plant

The moth plant beetle, an organism new to New Zealand, can now be used in the fight to control moth plant. In mid-May the Environmental Protection Authority (EPA) approved an application by Waikato Regional Council to import the beetle.

[Read more here.](#)

## Lesson from BMSB expert

Experience from countries where the invasive BMSB is present is highly valuable to the kiwifruit industry, and New Zealand, in preventing and controlling any potential BMSB outbreaks. KVH attended a Plant & Food Research-run presentation by Professor Claudio Ioriatti, a world-renowned expert on BMSB, who shared useful knowledge from the European BMSB control effort.

[Read more here.](#)

## Keep NZ free from stink bug winter woes

We may be out of the high-risk season for Brown Marmorated Stink Bug (BMSB) but that's no reason to stop being on the lookout. KVH and other horticultural groups are working together again this year on keeping the BMSB profile up over the winter months

[Read more here.](#)

## New in-flight biosecurity video

A new in-flight biosecurity video will remind international travellers about the importance of protecting New Zealand from unwanted pests and diseases. The video will play to arriving passengers on all airlines with screen capacity.

[Read more here.](#)

## Remove unpicked fruit from vines

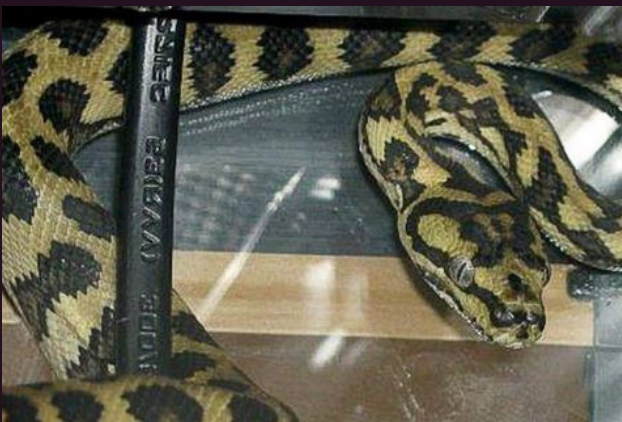


Growers have been reminded that all unpicked kiwifruit must be removed from vines by 1 July.

Unpicked fruit can increase the amount of wild kiwifruit plants establishing in nearby areas of native bush or forestry as fruit ripening over the winter months provides a food source for birds.

[Read more here.](#)

## Snakes on a plane!



A flying snake and carpet python were among the rising number of reptiles that biosecurity staff seized at our borders. This included two of the world's most poisonous snakes – a tiger snake and a banded sea krait – along with different species of lizards and a turtle.

[Read more here.](#)

## New Waihi weather station data



A new weather station has been installed at Fisher Road to support Waihi growers. The station was installed by Hortplus and extends the network of weather stations across the country.

[Read more here.](#)

# Tool hygiene important through pruning



KVH recently visited a Gold3 orchard with multiple plants showing Psa infection symptoms both above and below autumn applied girdles.

Vines had been girdled for the first time ever in January, with the girdle re-opened in February. Copper was applied to girdles in January; in February no copper was applied, though girdles were taped to assist healing.

The pattern of infection within blocks suggested poor girdling technique and lack of tool hygiene are likely to have been factors leading to vine infection - grower survey found that for some rows, 50% of plants were affected.

[Read more here.](#)