



Reporting the unusual

KiwiNet - 2 August 2018



Purple hearts kiwifruit seeds via mail – all the way to NZ



Free shipping 100 purple hearts kiwifruit bonsai varieties kiwi for home and garden bonsai tree bonsais

★★★★★ 5.0 (5 votes) | 20 orders

Price: ~~US \$0.99~~ / Bag

Discount Price: **US \$0.54** / Bag -45% 2 days left

 [Get our app to see exclusive prices](#)

Shipping: **Free Shipping to New Zealand via Seller's Shipping Method**

Estimated Delivery Time: 17-37 days 

Quantity: – 1 + Bag (99978 Bags available)

Total Price: **US \$0.54**

[Buy Now](#)

[Add to Cart](#)

 [Add to Wish List \(13 Adds\)](#)

Oxalis sp, stitchwort and Actinidia sp. (possibly *A chinensis*)

- AsureQuality Seedlab
Palmerston North
identified seed contained
in the unopened packages



How can you help? If it looks unusual, call us!





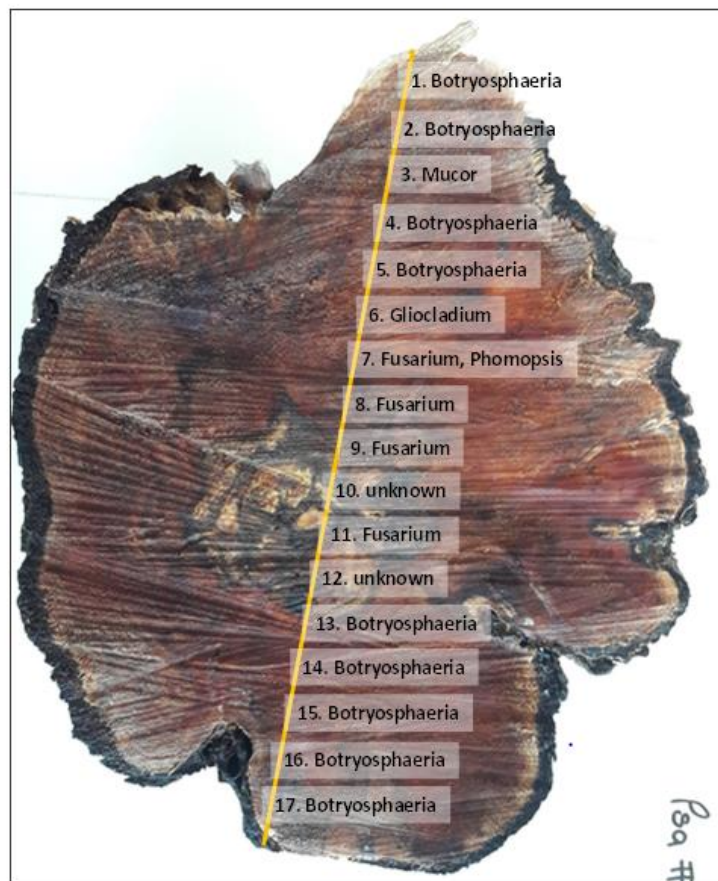
Unusual vine symptoms ?
Call KVH - 0800 665 825





Looking for causes: MPI support





So what's out there ?

- Fusarium
- Botryosphaeria
- Mucor
- Gliocladium
- Cadophora sp.
- Phomopsis

Isolated from vines showing crown rot - Edgecumbe site.
Thanks to Joy Tyson and Mike Manning (P&R) for diagnostic work.

Figure 1. Photo of the crown cross-section of Vine 1, showing the isolation points and the fungi identified.

Reporting back to industry



Detailed report relating to cupped leaves on Gold3 vines



Date of report: 16 October 2017

What was found?	Grower reported cupped leaves on vines on two of his Gisborne orchards - some distance apart. One orchard had 55 vines affected and one had 32 plants (Gold3 - 3 years off graft). Gold3 vines grafted to both Bounty and Bruno were affected. Symptomatic vines were scattered across the orchards and not in any particular pattern. Vines and buds healthy.
Where?	Gisborne
When?	12 October 2017
Reported by	Grower
Kiwifruit variety	Gold3
Symptoms	Cupped leaves on scattered vines across two orchards.
Action taken	KVH requested information on sprays applied as they suspected it to be herbicide damage. Pictures were sent to the Ministry for Primary Industries (MPI) to identify a possible cause and to determine if samples should be taken.
Outcome and requirements going forward	MPI responded that: <i>The consensus from the laboratory is that this is not a disease issue. The general thinking is that the symptoms could be attributed to off-target herbicide or growth regulator damage. Some thoughts were that the cupping could be due to exposure to dicamba or a growth regulator such as 2,4-D. Picloram, aminopyralid, and dicamba are often</i>

