

Myrtle rust in New Zealand

The biosecurity response

Growing and Protecting New Zealand



www.mpi.govt.nz

Timeline

- 27 March 2017 – Raoul Island
- 2 May 2017 – found in Kerikeri nursery
- 17 May – Waitara, North Taranaki
- 21 May – Te Kuiti
- 14 June – Te Puke
- 13 July – Stratford



What we're doing

- Contain the infection and eliminate it locally if we can
- Field activities include:
 - Surveillance
 - Movement Controls
 - Working with the nursery industry
 - Treatment of infected sites and goods
 - Removal of infected plants
 - Public awareness



Detections

- Currently 112 confirmed sites:
 - 4 Northland
 - 2 Waikato
 - 32 Bay of Plenty
 - 74 Taranaki
- Detected on:
 - *Lophomyrtus* **5.4%** (70/1037)
 - *Metrosideros* **0.4%** (41/8231)
 - *Callistemon* **0.24%** (3/1242)
 - *Syzygium* **0.21%** (3/1413)
 - *Eucalyptus* **0.1%** (1/990)
 - *Leptospermum* **0.05%** (1/2219)

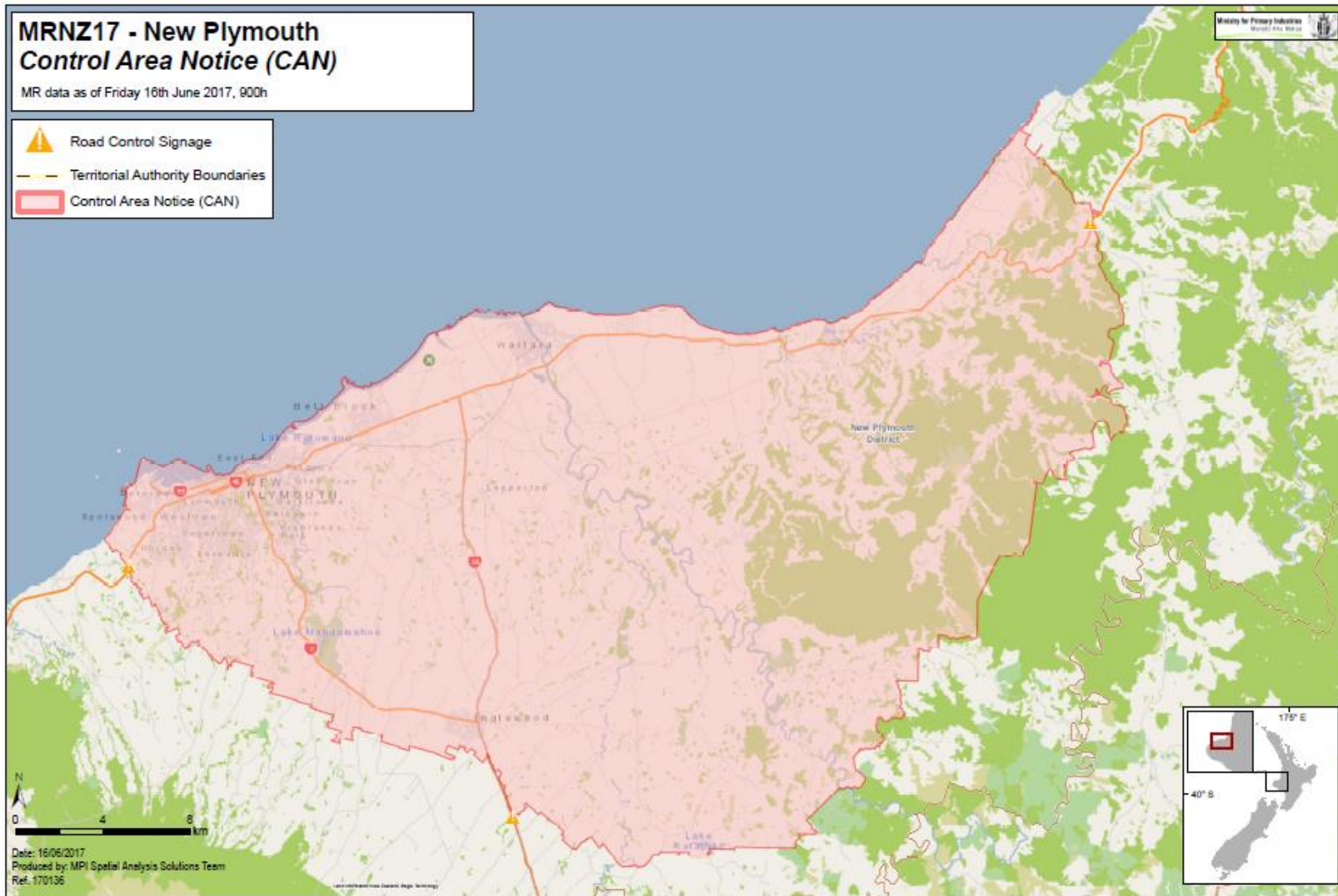


North Taranaki

MRNZ17 - New Plymouth Control Area Notice (CAN)

MR data as of Friday 16th June 2017, 900h

-  Road Control Signage
-  Territorial Authority Boundaries
-  Control Area Notice (CAN)



Te Puke



This map and all information accompanying it is intended to be used as a guide only, in conjunction with other data sources and methods and should only be used for the purpose for which it was developed. The information shown in this Map is based on a summary of data obtained from various sources. While all reasonable measures have been taken to ensure the accuracy of the Map, MPI (a) gives no warranty or representation in relation to the accuracy, completeness, reliability or fitness for purpose of the Map; and (b) accepts no liability whatsoever in relation to any loss, damage or other costs relating to any person's use of the Map, including but not limited to any compilations, derivative works or modifications of the Map. Crown copyright ©. This map is subject to Crown copyright administered by Ministry for Primary Industries.

**MRNZ17 - Te Puke Area
of Incursion
Overview: 9/08/2017
IN-CONFIDENCE/MPI USE ONLY**

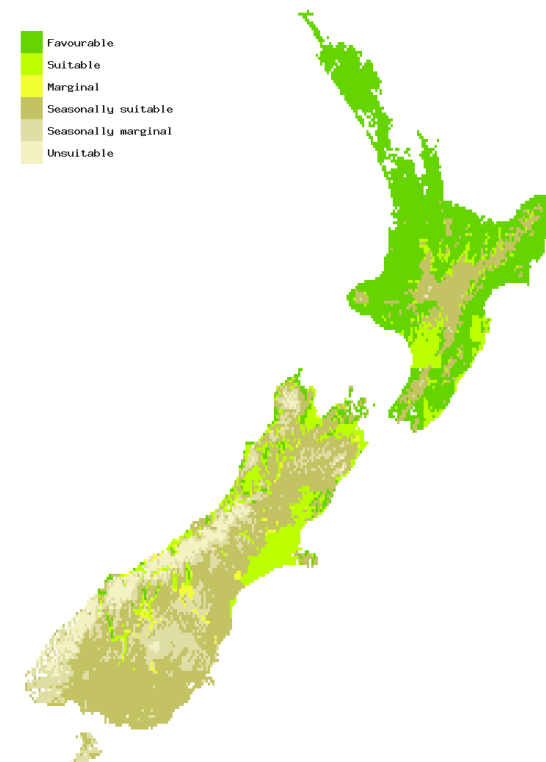
0 2 4 Km
Ministry for Primary Industries
Manatū Ahu Matua
Prepared by the Information
& Data Management Team
Date: 9/08/2017

NZ climatic suitability

Spread rate and probable areas of high impact will depend on a number of factors:

- localised conditions/micro climates,
- host density
- susceptibility of the species/individuals present.

CLIMENZ simulation results	Affected area km ²	% area of NZ	% area cumulative
Favourable	85,234	33%	33%
Suitable	30,597	12%	45%
Marginal	3,100	1%	46%
Seasonally suitable	97,922	38%	83%
Seasonally marginal	30,688	12%	95%
Unsuitable	12,546	5%	
Total	260,087	100%	



Next response steps

- Continue searching – including iwi surveillance training and DOC surveillance
- Continue removal of infected plants
- Surveillance of non-infected/asymptomatic hosts at infected places
- Supporting affected communities and businesses
- Planning for future protection of our taonga species, environment and economy

